

Warbler



Black-throated Gray Warbler

APRIL/MAY 2010
Volume 74 Numbers 4&5

In this issue...

Morning Bird Song Walks
Page 2

Nature Nights in April & May
Page 10

Peregrines & Pinot
Page 12



BIRDATHON 2010

For the Love of Birds, join your friends, family, fellow members, volunteers, staff, and board in support of the Audubon Society of Portland. You can help make our **30th Anniversary of Birdathon** an extra-special fundraising celebration! See all the details and register at www.audubonportland.dojiggy.com.

Birdathon is the uniquely Audubon way to help protect Oregon's native birds and wildlife—it's like a walk-a-thon only better: you count beautiful bird species instead of miles.

Birdathon is a fun and educational event for any level of birdwatcher from beginner to advanced, as well as for those who just cheer them on! **You can join our guided trips, organize your own trip, or count birds independently.** Ask your friends and family to pledge a donation to the Audubon Society of Portland on a fixed or "per-species" basis. Then try to see as many species as possible in a period of up to 48 consecutive hours. Finally, collect your pledges!

Birdathon is an opportunity to learn about birds, make new friends, and enjoy Oregon's natural environment. It also generates greatly needed funds for the Audubon Society of Portland: Birdathon raised \$125,000 in 2009! We offer

trips for kids and adults, beginners to advanced, and for special interests like birding on bikes or birding by public transportation. Whether you're a beginner or a veteran, Portland Audubon has a trip for you—or we'll help you organize one.

The culmination of the event is the **Birdathon Banquet, scheduled for Friday, June 18**, when prizes are awarded to those raising the most money and those with the most sponsors, the best photographs, or the most unusual sightings, to name a few. The food is excellent, and the Bird Quiz never fails to rekindle the fun and good-natured competition of bird identification! Event sponsors, prize donors, and volunteers are all honored, and families are welcome.

The Audubon Society of Portland has been protecting Oregon's wildlife and wild places for more than a century. We are today one of Oregon's largest and most effective conservation organizations, with a reputation for consistent leadership in science-based conservation, environmental education, and wildlife rehabilitation.

Birdathon happens only once a year—
Join us at www.audubonportland.dojiggy.com!

14th Annual Native Plant Sale

May 15–16 (Sat–Sun), 10am–4pm

by Tom Costello, Sanctuaries Director

I spent this past weekend exploring the neighborhoods and parks of Southeast Portland with my family. Spring is here and the birds are starting to sing again, the flowers are blooming, leaves are budding out. Even with the mountains, the coast, the waterfalls, and the rainforests which bless our region, I am perhaps most impressed with natural beauty that pervades our urban landscape. Rain gardens, ecoroofs, and naturescaped yards soften the hard edges of asphalt and concrete, manage water more efficiently, provide habitat for birds and other wildlife, and create a more hospitable environment for all of us in the city.

Native plants are the cornerstone of this sustainable landscape—they are adapted to grow in our soils and climate, require less care than exotic ornamentals, and allow for natural ecological function in the landscaped environment. **Come to Portland Audubon's 14th annual Native Plant Sale on Saturday, May 15 and Sunday, May 16, 10am–4pm**, and explore the wide variety of native plants available for your home landscaping projects. In addition to all of the benefits of landscaping with native plants, purchases at our plant sale directly support our

ongoing habitat restoration efforts in our sanctuaries.

Once again, our sale boasts **over 100 species of native trees, shrubs, herbaceous perennials, bulbs, grasses, and vines** to enhance your yard, garden, or acreage. As always we will have our wonderful shopping lists on hand, painstakingly compiled by longtime Audubon volunteer Gregg Everhart. Our shopping lists provide a wealth of information on all of the plants available: typical size, growing conditions, habitat value, and even the color of the flower and fruit type. You can use the shopping list to find out what will grow in that moist, shady back corner of your yard, or which plants will help you attract butterflies and hummingbirds. More comprehensive information on individual plants is posted above plants themselves, including photographs of the plant in bloom.



Harriet Anderson and Tom Costello
© Rick Meyers

Continued on page 8

Half-Day Trips

Whittemore's Whatzits
Laura Whittemore is a fantastic leader! Perfect for beginners in Oaks Bottom Wildlife Refuge.

May 9 (Sun),
8am–Noon

Full-Day Trips

The Joy of Birding
Paul Sullivan goes from sunrise to sunset and after, Portland to the coast.

May 1 (Sat),
6am–11pm

The Murre the Merrier

Sarah Swanson and Max Smith explore diverse habitats in Washington County to the coast.

May 1 (Sat),
7am–8pm

The Roadrunners

Bike Gallery staff and Audubon staff bring you birding by bicycle. Two trips to choose from: a 1-day and an overnight camping trip (Gonzo Trip below).

May 15 (Sat),
8am–2pm

Magpies

Slower paced, informative trips with Denny Graham and Ron Spencer. Two different trips; join one or both.

May 4 (Tue),
7am–4:30pm
May 5 (Wed),
7am–4:30pm

Raven Maniacs

Join Steve Robertson, our Education Director, and Dan van den Broek, Master Birder Coordinator, for a complete day of birding the city to the sea!

May 7 (Fri),
6am–11pm

A-Grebe-Able Bunch

Travel with two incredible Audubon birders, Peg Goldie and Tom Love, for a dawn-to-dusk birding adventure.

May 8 (Sat),
4:30am–11pm

Mult Madness

A brand new Birdathon Team!
Join leaders John Fitcher, author of *Birding Portland & Multnomah County*, and Wink Gross, Portland Christmas Bird Count compiler. They'll lead you on a unique tour to birding hot spots in Multnomah County: Smith & Bybee Lakes, Mt. Tabor, Larch Mountain, Eagle Creek, Sandy River Delta, and Sauvie Island. See 100 to 120 species!

May 8 (Sat),
5am–6pm

Creepers Go Coastal!

Veteran leaders David Smith and Tim Shelmardine are expanding to the coast.

May 8 (Sat),
7am–7pm

Bus Passerines

Steve Engel covers the Portland Metro area by public transit and on foot.

May 12 (Wed),
7am–5pm

Gonzo Trips (2+ days)

Roadrunners Overnight Bike & Bird Tour
Extension of day trip (see above) with camping on Sauvie Island.

May 15 (Sat), 8am –
May 16 (Sun), 3pm

Cream of the Crop

Birdathon Coordinator Gary Slone leads this 2-day bird quest to the coast. Transportation, lodging in Neskowin, and Sunday breakfast are provided! Limited to 10 participants. A minimum of \$600 in pledges is requested.

May 15 (Sat), 8am –
May 16 (Sun), 3pm

The Wild Turkeys

Join Mike Houck, Ron Carley, and other notorious birders for the ultimate gonzo Birdathon experience. Transportation and lodging are provided. Limited to 24 participants. A minimum of \$600 in pledges is required.

May 21 (Fri), 6am –
May 23 (Sun), 8pm

SUMMER CAMP SCHEDULE! See page 7



Audubon Society
of Portland
5151 NW Cornell Road
Portland, Oregon 97210

Inside this issue

Page 2 From the Director
Page 3 Audubon Outings
Page 4 & 5 Conservation
 Wildlife Care Center
Page 6 & 7 Trips & Tours & Classes
Page 8 Nature Store
 Sanctuaries
Page 9 Field Notes and Volunteers
 Calendar at a Glance
Page 10 New Members
Page 11 IBA of the Month
Page 12 Map/Hours/Sponsors

From the Executive Director

Maintenance is No Longer an Option



Meryl Redisch

Is it enough to maintain our natural resources and expect that ecosystem productivity, species diversity, and human health will improve?

According to the World Wildlife Fund's Living Planet Report, one-third of the Earth's wildlife populations have declined in the last 35 years, and humanity's demand on the planet now exceeds the regenerative capacity by about 30%. Drawn from 1300 researchers in 95 countries, the Millennium Assessment concludes that the way society obtains its resources has caused irreversible changes that are degrading the natural processes that support life on Earth. The 2009 State of the Birds Report by National Audubon and other avian conservation organizations and resource agencies underscores the precipitous situation in native bird populations for nearly every habitat type in the country. With these sobering scenarios, I've reached the conclusion that simply maintaining our forest, marine, wetland, and urban environments is not sufficient if we truly want a shot at reversing the environmental trends in front of us.

You know from reading conservation sections in past *Warblers* that Portland Audubon is closely tracking the city's decision-making process on the River Plan. We believe that without language that specifies significant restoration goals and adequate funding, Portland's premier natural resource will further degrade. Maintaining the current system, which provides minimal levels of habitat protection and allows industry to avoid paying the real costs of impact on wildlife habitat, will do little toward returning the river to a healthier place for people and wildlife.

Fishing is an Oregon way of life for many coastal residents. However, continuing to manage these resources as we have in the past is just not sustainable. Not if we sincerely want large mature fish restocked, habitat restored, and forage fish replenished. Worldwide it is estimated that some 90% of species of large predatory fish are gone. Domestically, of 230 assessed U.S. fisheries, 54 stocks are classified as overfished,

45 are experiencing overfishing, and the status of just over half of the nation's stocks are unknown.*

Today, out of 81 ocean bird species, almost half are of conservation concern; based on available data, 39% of ocean bird species are declining.** For birds and fish worldwide, the business-as-usual approach is not working. Oregon needs stronger policies and better management tools to arrest the precipitous pace of ocean degradation. With the passage of the Marine Reserves legislation (HB 3013) during the 2009 session, new political leadership, and a fired-up grassroots community, Oregon's management of its marine resources is moving in a positive direction. What is still needed is sufficient funding for research, monitoring, and enforcement.

For the last decade Oregon's state forests have been managed under the Greatest Permanent Value Rule which places economic, environmental, and social benefits on equal footing. Crafted by stakeholders representing timber, county government, and conservationists, the concept of managing these common resources for the common good is laudable. Currently, the policy for how the Oregon Department of Forestry manages our state resources is being revised with potentially harmful consequences. At risk is a shift away from a multifaceted approach to one where timber production is top priority. At risk is the loss of habitat for vulnerable birds like the Northern Spotted Owl and Marbled Murrelet. At risk is the continuation of the unfair influence that a handful of counties exert on the state based upon an agreement that is seven decades old. At risk is whether the revised rule will become a plan that focuses on maintenance of these landscapes or goes further.

Today, Oregonians have numerous opportunities to change the way we manage our natural resources by taking new steps to improve and restore our forests, soils, water, and wildlife. Today, just maintaining what we have is not an option.

*Environmental Defense Fund, "Fisheries in Decline" at www.edf.org/page.cfm?tagID=1742.
**State of the Birds Report, at www.stateofthebirds.org/habitats/oceans.

Morning Bird Song Walks 2010

Mondays, Wednesdays–Fridays at 7am: April 1–June 4 • Tuesdays at 8am: May 11–June 1

Audubon Society of Portland is proud to sponsor the 2010 season of weekday Morning Bird Song Walks! From beginners to advanced birders, anyone who is fascinated by the sounds of birds should take advantage of these guided walks to the metro area's prime spring migration hot spots. By starting with the earliest trips you can learn the songs of the common resident species and then, when the migrants arrive, you'll be able to sort them out during the morning chorus.

Walks begin at 7 a.m. **EXCEPT the Tuesday 8 a.m. walks at Leach Botanical Gardens.** Leave whenever you need to get to work. No pre-registration is required. Bring binoculars and field guide and be sure to dress properly for the weather: spring mornings can be surprisingly chilly. **Try taking TriMet** (routes and phone numbers below).

Morning Bird Song Walks

Mondays 7am: Tryon Creek State Park and Tualatin Hills Nature Park April 5, 12, 19, 26 • May 3, 10, 17, 24, 31

Directions to Tryon Creek: Take Terwilliger Blvd exit off I-5 and head south toward Lewis and Clark College, past the intersections with Taylors Ferry Rd and Boones Ferry Rd. At the traffic circle, continue on Terwilliger past the entrance of Lewis and Clark Northwest School of Law and follow the brown sign about 1 mile to Tryon Creek State Park. Meet at the Nature Center.

Directions to Tualatin Hills Nature Park: From the Westside MAX [www.trimet.org] get off at Merlo Rd Station and walk down the trail into the preserve to the Interpretive Center (about one-half mile). By car, take Murray Blvd south from Hwy 26 to Millikan Blvd and turn right; the park is at 15655 SW Millikan Blvd. just past the second railroad tracks.

new! Tuesdays 8am: Leach Botanical Gardens May 11, 18, 25 • June 1

Directions to Leach Botanical Gardens: Go east from I-205 on Foster Rd to 122nd Ave. Turn right, go about 1/4 mile through some curves, cross Johnson Creek, and park in lot immediately after creek on right side. Walk back across creek to main house and trails if you don't see the group in parking lot. [Check www.trimet.org for service.]

For natural history information, maps, and directions for any of these natural areas see *Wild in the City: A Guide to Portland's Natural Areas*, available at Portland Audubon's Nature Store.

This year our volunteer leaders include, along with other Audubon volunteer naturalists:

- Rick and Stephanie Wagner Mondays: Tryon Creek State Park
- Greg Creager Mondays: Tualatin Hills Nature Park
- Ron Escano and John Nikkel Tuesdays 8am: Leach Botanical Gardens
- Gerard Lillie Wednesdays: Mt. Tabor
- Paul Sullivan Thursdays: Camassia Preserve
- Wink Gross Fridays: Pittock Mansion

Wednesdays 7am: Mt. Tabor April 7, 14, 21, 28 • May 5, 12, 19, 26 • June 2

Directions to Mt. Tabor: From SE Belmont, go south on SE 69th two short blocks, just into the park. Turn right and drive as far as possible to gate and park along street. Mt. Tabor Park is closed to vehicle traffic on Wednesdays, so be sure to use this entrance. [Mt. Tabor Tri-Met Bus #15 stops at SE 69th & Yamhill St.; call 503-231-3215 or check www.trimet.org.]

Thursdays 7am: The Nature Conservancy's Camassia Preserve April 1, 8, 15, 22, 29 • May 6, 13, 20, 27 • June 3

Directions to Camassia Preserve: Take Exit 8 off I-205 and turn toward Oregon City (but don't cross the river). At the 76 gas station, turn right, then left to follow Willamette Falls Dr. Turn right on Sunset, cross I-205, and immediately turn right on Walnut St. The preserve is at the end of Walnut.

Fridays 7am: Pittock Mansion April 2, 9, 16, 23, 30 • May 7, 14, 21, 28 • June 4

Directions to Pittock Mansion: Follow West Burnside about 1.2 miles west of NW 23rd and turn right onto NW Barnes Rd. Follow the well-marked signs through the neighborhood for another 0.7 mile and meet in the parking lot. [West Burnside Tri-Met Bus #20 stops at the bottom of the hill; call 503-231-3220 or check www.trimet.org.]

Audubon Family Adventures: "Banana Slugs and Banana Splits!"

Join Audubon volunteer naturalists for "Banana Slugs and Banana Splits," our newest Audubon Family Adventure designed to offer an opportunity for families to enjoy and learn about nature together. "Why are banana slugs important?" Take a guided walk through Audubon's sanctuary to find them in nature and learn the answer, enjoy a light snack, and make a take-home craft.

Date: Saturday, May 8, 2010

Time: 9 a.m.–Noon (on day of event, please check in 8:45–9:00 a.m.)

Place: Audubon Society of Portland, Heron Hall
Target age: 5–9 years (an adult must accompany every 1–3 children.)

Cost: \$10 per participant

Space is limited, so get your registration in soon at audubonportland.org/about/volunteer/family. Please dress for the weather and wear sturdy hiking shoes.



Kids' crafts are only part of the fun! © Karen Munday

Festival of the Birds Saturday, May 8th, 9am – 3pm

Sellwood Park, just south of Oaks Bottom Wildlife Refuge

Join U.S. Fish and Wildlife Service, the City of Portland, and Portland Audubon for a Celebration of Migratory Birds.

Oaks Bottom and other natural areas in Portland are important to migrating birds for nesting, wintering, resting, and refueling. Come and see birds hailing from as far away as Argentina in Oaks Bottom Wildlife Refuge, the City of Portland's first designated Migratory Bird Park.

This is a free festival for the whole family to celebrate International Migratory Bird Day. No registration is needed for most activities.

Early Bird Walk at 7:00am, registration required at 503-823-2525 or www.PortlandParks.org (class #317309).

Guided Bird Walks, 9am–2pm.


Family Activities! Make birdfeeders for your mother's garden, run as fast as birds fly in our Bird Olympics, create bird pictures using forms from NW Native American art, send a bird postcard to schools along the Pacific Flyway, and choose from a myriad of other activities.

Storytelling and Live Music by local storytellers and musicians. Come hear songs and stories about migratory birds in the Portland area.

Education Birds from Audubon Society of Portland's Wildlife Care Center. See up close a Peregrine Falcon, Great Horned Owl, Northern Spotted Owl, American Kestrel, Turkey Vulture, and Common Raven.

Interactive Displays: Visit with local partners of the Migratory Bird Treaty Program and find out what's happening locally to protect and enhance our bird populations.

Audubon Outings — Wild in the City and Beyond

 = Birding trips starting later, going slower, with restrooms in sight

 = Sign-up needed

\$ = Fee involved

 = Wheelchair accessible

April 3 (Sat), 9am–12:30pm Lower Johnson Creek Bike Ride

Join Audubon's **Jim Labbe**, and **Matt Clark** and **Theresa Huntsinger** from Johnson Creek Watershed Council, for a 21-mile bike ride out the Springwater Trail to Gresham's Linneman Station and back. We'll pedal through the lower Johnson Creek Watershed, stop at urban natural areas along the way, and learn about future opportunities to protect and enhance the watershed. You are responsible for bringing and maintaining your own bicycle; helmets are absolutely required. Be ready to ride at 9am; meet at Springwater Trailhead at south end of Sellwood Park (SE Spokane and Oaks Park Way). Free! No sign-up needed.

April 10 (Sat), 8am–11am Oaks Bottom Wildlife Refuge **\$**

Join **Mike Houck** on a bird sight and song walk around 160-acre Oaks Bottom Wildlife Refuge. The walk is a gentle two-mile stroll on a combination of paved and uneven dirt paths, with two moderate hills. More than 100 species of birds have been seen in Oaks Bottom, Portland's first official urban wildlife refuge.

Fee: \$8 per person, \$12 per family. **Pre-registration required** at www.audubonportland.org/trips-classes-camps/adult/wic (if you don't have internet access, call 503-292-6855 ext.112); directions will be sent to registrants.

April 10 (Sat), 8am–11am Ridgefield NWR's Carty Unit

Join leaders **Robin Carpenter** and **Gabriel Forcier** on the 2-mile Oaks to Wetland loop of the Ridgefield National Wildlife Refuge. Many parts of the trail are uneven, rocky, steep, narrow, and may become slippery when wet. Wear sturdy shoes and use caution to avoid contacting poison oak in some areas. A good variety of birds can be expected. From I-5, take Exit 14; turn left onto Pioneer St (501); go west 3 miles into the town of Ridgefield until Pioneer 'Ts' with Main Ave. Turn right on Main and drive north for 1 mile; refuge entrance road is on the left. Beginners welcome; no sign-up needed.

April 17 (Sat), 8am–11am Crystal Springs Rhododendron Garden

Join leaders **Dena Turner** and **Phyllis Wolfe** to get close looks at ducks and waterfowl in the beautiful gardens. We may also see spring songbirds. Meet in the parking lot on the west side of SE 28th Ave. The garden is one block north of SE Woodstock next to Eastmoreland Golf Course and across from Reed College. We may conclude with a hike through Reed Canyon to observe forest species and waterfowl. Beginners welcome; no sign-up needed.

April 17 (Sat), Noon–3pm Ross Island Paddle **\$**

Join **Mike Houck** on a paddle to celebrate the designation of the Ross Island Lagoon by the Oregon State Marine Board as a No Wake Zone, and the continuing effort to get the same designation on the entire Holgate Channel. Highlights of this paddle around Ross, Hardtack, East, and Toe Islands will be waterfowl, Bald Eagles, and Peregrine Falcons. You'll also learn about the Friends of Ross Island and how to volunteer with them and Portland Audubon, Willamette Riverkeeper, and Portland Parks on cleanups and restoration activities.

Fee: \$8 per person, \$12 per family. **Pre-registration required** at www.audubonportland.org/trips-classes-camps/adult/wic (if you don't have internet access, call 503-292-6855 ext.112); directions will be sent to registrants.

April 21 (Wed), 8am–11am Oaks Bottom Wildlife Refuge **\$**

See April 10 description.

April 24 (Sat), 8am–11am Smith & Bybee Lakes

Marsh Sly will take us through Smith & Bybee Lakes, a great spot for waterfowl and the raptors that are always present. We can count on passerines in the forest as well. We will meet at 8am in the Smith & Bybee parking area, which is 2.5 miles west of I-5 on Marine Drive just after the overpass, on the left. For information and directions, contact Marsh at marshandsharon@aol.com or 503-201-8119. Beginners welcome; no sign-up needed.

April 24 (Sat), 1pm–3pm Marquam Bridge Peregrine Watch

Come see the fastest bird on the planet nesting and raising young right in the middle of downtown Portland. Peregrine Falcons have nested on the Marquam Bridge since 2007. The Springwater Trail, which runs between OMSI and the River, is a great place to watch the Falcons go through their annual nesting cycle. In fact it is possible to look directly into their nest and see the young as they grow. Audubon naturalists will be out at this site on Saturday afternoons throughout the spring to show you the Falcons and explain about their nesting behaviors and their amazing recovery from the brink of extinction. We will have spotting scopes, binoculars, and information on the Peregrines. Stop by between 1pm–3pm and stay as long as you like. Park at OMSI and walk west to the river. The Peregrine Watch observation point will be apparent. Free! No sign-up needed.

April 25 (Sun), 8am–11am Mt. Talbert Nature Park

Join **Ron Escano** at Mt. Talbert Nature Park for early spring migrants. We will be walking on established trails, but the terrain is hilly, footing uneven. From I-205, Exit 14 Sunnyside/Sunnybrook offramp, turn east on SE Sunnybrook Blvd. Turn south on SE 97th Ave, which turns into SE Mather Rd. Entrance is on the north side of the road, about 1/4 mile after 97th changes to Mather Rd. Beginners welcome; no sign-up needed.

April 26 (Mon), 8am–4:30pm Nisqually NWR

Watch the spring migration at the newly reconfigured Nisqually NWR near Olympia. Meet trip leader **Sarah McCarty** at the Safeway parking lot (NE corner) in Jantzen Beach (take Exit 308 off I-5) at 8am and carpool from there, or meet the group at Nisqually 10am–10:30am (take I-5 north past Olympia to Exit 114 and follow the signs; you'll cross over the freeway and turn right). **Fee:** \$3/car. Bring a lunch and water. Call Sarah with questions at 503-636-1288.

May 1 (Sat), 1pm–3pm Marquam Bridge Peregrine Watch

See April 24 description.

May 4 & 5 (Tue & Wed), 7am–4:30pm Magpies Birdathon

Tue, May 4: Meet at 7am at the Mt. Tabor Volcano Parking Lot. We will spend the early morning at Mt. Tabor focusing on songbirds and then proceed to Ridgefield NWR for the rest of the day. We will visit both units at Ridgefield to include a wide range of habitats for the day.

Wed, May 5: Meet at 7am at the Tualatin Hills Nature Park Interpretive Center, 15655 SW Millikan Way. We will spend the early morning there looking for songbirds, then proceed to Jackson Bottom and Tualatin River NWR to include a wide range of habitats for the day. For more information call **Denny Graham** at 503-659-1245 home or 503-351-8706 cell, or call **Ron Spencer** at 503-656-5170 home or 503-481-0488 cell.

May 5 (Wed), 8am–Noon Ridgefield NWR's Kiwa Trail

Join us on a walk on the Kiwa Trail looking for rails and bitterns. This trail on Ridgefield National Wildlife Refuge has been closed since October 1 so should be great birding. The trail is a flat 1.5-mile walk. Meet **Ron Escano** (503-771-3454 for directions) at the Kiwa Trailhead on the River 'S' Unit. Beginners welcome; no sign-up needed.

May 8 (Sat), 7:30am–5pm Netarts Bay & Cape Meares Birding

Let's explore Netarts Bay and the surrounding area for seabirds and waterfowl. We'll also take a short hike on the south trail to the Octopus Tree and Cape Meares Lighthouse. Meet at the North Plains Chevron Station just north of Hwy 26 at Exit 57 (North Plains–Glencoe Rd) and plan to depart by 7:30. Dress for weather; bring binoculars, lunch, and water. We'll return to Portland by 5pm. Contact **Marsh Sly** at marshandsharon@aol.com or 503-201-8119 with questions. Beginners welcome; no sign-up needed.

May 8 (Sat), 9am–Noon Ross Island Restoration Trip

Help Audubon, Willamette Riverkeeper, and Portland Parks restore habitat on Ross Island. We'll paddle to the island from the Portland Boathouse and spend some time pulling invasive garlic mustard. Public access to the island is restricted, so this is a great chance to visit at

the peak of breeding season and assist in the restoration process. Get your hands in the dirt and learn about the history of the island, its ecological value, and the vision for its future. Canoes will be provided free of charge by Willamette Riverkeeper for volunteers who do not own one. All necessary equipment will be supplied. **FREE, but pre-registration required:** contact **Marissa Dorais** at [Portland Parks, marissa.dorais@be.ci.portland.or.us](mailto:marissa.dorais@be.ci.portland.or.us) or 503-823-7016.

May 8 (Sat), Noon–3pm Oaks Bottom Wildlife Refuge **\$**

See April 10 description.

May 8 (Sat), 1pm–3pm Marquam Bridge Peregrine Watch

See April 24 description.

May 13 (Thu), 8am–11am Steigerwald Lake NWR

Join leader **Ron Spencer** for about a two-mile hike at Steigerwald Lake NWR. This recently opened refuge offers a wide variety of habitat. Expect to see migrating birds as well as waterfowl and other marsh birds. Meet at the refuge parking lot off SR-14 just east of Washougal, WA at 8am. Take SR-14 east from I-205 for about 12 miles. The entrance is east of 15th St, east of the sewer plant, and turn right just past the Columbia River Gorge sign. Contact Ron at rleydens@comcast.net or 503-656-5170 with questions.

May 15 (Sat), 1pm–3pm Marquam Bridge Peregrine Watch

See April 24 description.

May 20 (Thu), 8am–6pm+ White River Rimrocks

Interested in exploring the unique oak woodland and basalt rimrock country of North Central Oregon? There is the chance to see Lewis's Woodpeckers, Ash-throated Flycatchers, Lazuli Buntings, Canyon Wrens, and Golden Eagles. We will spend most of our time on the White River WMA around Tygh Valley. Meet at the Outlet Mall parking lot in Troutdale at 8am and plan on an all-day adventure, getting back after 6pm. Call **Ron Escano** at 503-771-3454 for details and to reserve a spot.

May 22 (Sat), 1pm–3pm Marquam Bridge Peregrine Watch

See April 24 description.

May 26–27 (Wed–Thu), 7am–5pm Morrow & Umatilla Counties

Ever wonder where Blalock Canyon Road goes? Ever been to McNary Park, Whitcom Island, or on the Oregon Trail along Immigrant Road? Join **Ed Hausafus** on this journey up the Oregon grassland side of the Columbia River, stay overnight in Hermiston, and return on the Washington side. Trip is limited to seven cars. Contact Ed at Ethaus@aol.com or 503-637-3485 for information.

May 27 (Thu), 7:30am–8:30am Bird Walk at Nadaka Nature Park

Join Audubon's **Jim Labbe** and **Lee Dayfield**, Wilkes East Neighborhood Association, for a morning stroll through Nadaka Nature Park in west Gresham. We'll explore the natural and human history of this unique neighborhood nature park and learn about efforts to expand the park, enhance wildlife habitat, and improve access and environmental interpretation. We'll begin documenting bird species and discuss the value of urban natural areas to avian biodiversity. Meet at north entrance, one block north of NE Glisan on 172nd and 3 blocks east on Pacific St. No sign-up needed.

May 29 (Sat), 1pm–3pm Marquam Bridge Peregrine Watch

See April 24 description.

June 2 (Wed), 10am & 2pm Great Blue Heron Week Begins

Proclamations at Portland City Council & Metro

June 8–11 (Tue–Fri) Malheur NWR

Contact Shawn at shawnbirder@yahoo.com.

June 12 (Sat), 9am–Noon Ross Island Restoration Trip

See May 8 description.

The Audubon Society of Portland is a member of Earth Share of Oregon. For more information, contact Earth Share of Oregon at 503-223-9015 or on the web at www.earthshare-oregon.org.

Member of
EarthShare
Oregon

Protecting Birds in the Backyard and Beyond

Audubon, ONDA, and Defenders of Wildlife Petition State to Clarify Oregon Wind Siting Rules

by Bob Sallinger, Conservation Director

There are few things which will transform the Oregon landscape more than wind power development over the next several decades. Our oceans, mountains, gorges, and windswept deserts are all ripe for wind development. Our remotest and wildest landscapes, areas that as little as a generation ago seemed safe from development, are now teeming with wind energy prospectors. In many ways this is a cause for celebration as our state and our nation finally come to grips with the realities of global climate change. However, as the two articles below point out, it is also cause for vigilance and careful planning to ensure that impacts on vulnerable wildlife populations are minimized.

Development of wind power in Oregon is currently regulated through a bizarre bifurcated system. Wind projects that are greater than 105 megawatts are regulated through the State Energy Facility Siting Council (EFSC). While far from perfect, EFSC offers developers and citizens a clear, transparent process to review and comment on wind development proposals. Applications are required to be complete before approval is granted. This includes comprehensive studies of potential natural resource impacts. EFSC has the ability to charge developers to recover the costs of proposal review by other state agencies such as Oregon Department of Fish and Wildlife and to require binding mitigation for unavoidable natural resource impacts. EFSC also looks at cumulative impacts of facilities across the landscape.

Projects that fall below the 105-mw threshold, in contrast, can be submitted directly to the county in which they will occur for approval. The idea behind this two-layered system



Conservation Director Bob Sallinger atop Rattlesnake Road Wind Development near Arlington, Oregon. © Arlo Corwin

is that smaller, simpler projects would receive an expedited and least costly review at the county level. Projects can be given conditional approval prior to natural resource studies being completed. There is no requirement for cumulative impacts analysis, review by natural resource agencies, or binding mitigation for natural resource impacts. The process for public notice and comment varies from county to county.

We question the logic of this bifurcated approach. The counties have a favorite saying: "If you have seen one county in Oregon, you have seen one county." That sort of rugged individuality is laudable for many reasons, but it does not necessarily make sense when it comes to industrial-scale energy development. In reality there is no such thing as a small, simple industrial wind farm. Anyone who has visited a wind farm knows that in fact these facilities are a spider web of roads, power lines, turbines, electrical equipment, and buildings. The impacts go far beyond the site itself in the form of transmission lines that interconnect our electrical grid. A 104-mw facility that was permitted by Harney County is 10,000 acres — just slightly smaller than the City of Beaverton.

Portland Audubon, Oregon Natural Desert Association, and Defenders of Wildlife have petitioned EFSC to initiate rulemaking to close one significant loophole in the state's current regulations. The current regulations do not provide a clear definition of what constitutes a "single facility." As a result, developers are able to subdivide projects into multiple segments and avoid the more rigorous and protective EFSC review. The petition we have provided would require EFSC to create a clear and enforceable definition for a single facility. Some counties and developers have already lined up to oppose our petition. We believe that they are doing a disservice to both themselves and the public — we hear from the people at a rapidly increasing rate with growing concerns about what they perceive as irresponsible wind development.

The public has strongly supported renewable energy development to date, but that goodwill will rapidly dissipate if a strong system is not in place to protect Oregon's most important natural resources and treasured landscapes. A public comment period on the petition will go through early April. For more information on how you can support our efforts, go to www.audubonportland.org.

implement real protections for the Greater Sage-Grouse and sagebrush habitat right now. Greater Sage-Grouse currently only occupy 56% of their historic range. The Service found that the primary factors causing Sage-Grouse declines are loss and fragmentation of habitat "resulting from wildfire, energy development, urbanization, agricultural conversion, and infrastructure development." The Service further found that "if trends since the mid-1960s persist, many local populations may disappear within the next 30 to 100 years, with remaining fragmented populations more vulnerable to extinction in the long term." Oregon has a key role to play in Sage-Grouse recovery. Oregon Sage-Grouse populations and sagebrush habitat likely comprise nearly 20% of the historic range-wide distribution. Nearly 350 other species also depend on the sagebrush habitat as well.

There is no species that is more iconic of the west's wild open spaces than the Sage-Grouse. Their booming, strutting courtship displays are one of the truly spectacular events of the bird world. Our decisions now as to how we manage and protect our remaining intact sagebrush habitats will determine whether the Greater Sage-Grouse are around to be enjoyed by future generations.



Tufted Puffin © Don Baccus

State of the Birds: 2010 Report on Climate Change Released

by Bob Sallinger

On March 11, 2010, Secretary of the Interior Salazar announced the release of a new State of the Birds Report: Birds and Climate Change. This report was a joint effort of the U.S. Fish and Wildlife Service, National Audubon, American Bird Conservancy, and others. It follows on the 2009 State of the Birds Report, which revealed that nearly a quarter of North American bird species are experiencing serious long-term declines. The Birds and Climate Change Report adds to those concerns, showing that birds in every aquatic and terrestrial habitat type are being affected by climate change. The report is full of fascinating and frightening information about how we are changing our planet.

Among the most vulnerable species are our ocean birds — species such as puffins, albatrosses, murres, murrelets, and auklets — which have low reproductive rates, depend on vulnerable islands for nesting habitat, and are impacted by rapidly changing ocean conditions. Portland Audubon continues to work to establish a system of marine reserves in Oregon to ensure that critical ocean habitats on which our seabirds depend can recover from decades of overuse. Related to the marine reserves effort, we are also working with colleagues in Alaska, Canada, Washington, California, and Mexico on an initiative known as Baja to Barrows which will identify and map the most important marine bird areas along the western edge of the North American continent.

Also of particular interest to Oregonians is the report's call to continue to develop renewable energy resources — but to pay closer attention to how these facilities are sited to minimize the impacts of habitat loss and fragmentation. The report states that "Habitat loss, degradation, and fragmentation from the development of new wind farms and associated transportation corridors and power lines can cause direct mortality and indirect impacts to birds. Development of new technologies for renewable energy must account for potential new stressors that will negatively impact bird populations."

To read the full report, go to www.stateofthebirds.org/habitats.



Greater Sage-Grouse displaying at Malheur NWR. © BjornFredrickson.com

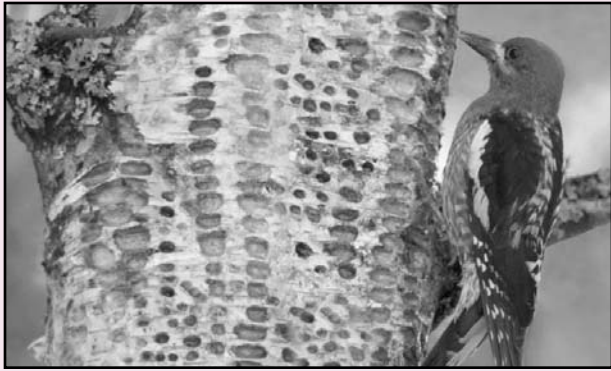
U.S. Fish and Wildlife Service Announces Sage Grouse Listing is "Warranted But Precluded"

by Bob Sallinger

On March 5, 2010, the U.S. Fish and Wildlife Service announced that the Greater Sage-Grouse warrants protection under the Endangered Species Act. However, the Sage-Grouse will not be listed at this time because there are too many other species that are in even greater need of protection under the Endangered Species Act and the U.S. Fish and Wildlife Service does not have sufficient resources to address them all. Instead, the Sage-Grouse will be placed on a list of species that are candidates for listing under the Endangered Species Act and the status of the species will be revisited each year. The Sage-Grouse joins 249 other species currently on the "warranted but precluded" list.

The Sage-Grouse decision drives home two points. First, Congress needs to adequately fund the U.S. Fish and Wildlife Service ("the Service") to allow it to address the growing list of species that are slipping toward extinction. Delaying Endangered Species Act protections for species such as the Sage-Grouse that qualify for listing will only make it more expensive and more difficult to recover them down the road.

Second, this decision is a clarion call to action for the federal government, Oregon, and other western states to



Red-breasted Sapsucker © Jim Cruce

You Can Help Our Restoration and Survey Efforts!

The efforts of citizens play an invaluable role in helping us track, understand, and manage our local wildlife populations and habitats. All you need is a desire to learn, a love of birds, and the patience to observe the natural world. For more information about these projects, contact **Mary Coolidge** at mcoolidge@audubonportland.org or 503-292-6855 ext.111.

April 24th Wapato Weed Pull, 9am–Noon

You bring the gloves and we'll provide the tools! The 180-acre Wapato State Access Area along the Multnomah Channel is part of the 12,000+-acre Sauvie Island Important Bird Area. Since last May, Audubon volunteers have been tirelessly monitoring birds at Wapato to help gauge the effectiveness of future Oregon State Parks and West Multnomah Soil and Water Conservation District habitat restoration projects.



A two-mile path around Virginia Lakes takes visitors through mixed deciduous-evergreen upland forest, past wetlands, through riparian ash and cottonwood forest, and into an Oregon White Oak Prairie restoration area. The site is host to at least 79 bird species found during our ongoing point counts, but like many urban natural areas, the invasion of non-native plants threatens the healthy habitat that wildlife depends on for their very lives. Earth Day Volunteers will participate in urgent habitat restoration here by helping to remove Himalayan Blackberry, Garlic Mustard, and Herb Robert Geranium. Join us — we guarantee you'll be gratified!



Cooper's Hawk © Mary Coolidge

Bird Safe Portland Surveys

Bird Safe Portland continues this spring with dawn surveys in the downtown area in search of birds who have struck windows overnight. Baseline data from this project will help us gain support for a seasonal "Lights Out Portland" program and for the development of Portland's own Bird-Safe Building Guidelines!

If you work in a building downtown, we want you to volunteer to survey your own building each day before work! Surveys run throughout the month of April. Volunteers are asked to sign up for 4 (or more) surveys throughout the season, each of which will vary a little in length, but shouldn't take more than an hour or two. We also continue to be interested in reports of possible bird-strike locations.

Vaux's Swift Monitoring

While Vaux's Swift roost monitoring is more famous and more focused in fall, we also monitor swifts in spring, from late-April through late-May. We will focus on Saturday nights to coincide with "Big Days," in which volunteers in participating areas throughout the Swift range monitor local roosts. The regional effort attempts a population estimate based on accumulation of data from a number of urban sites in California, Oregon, and Washington. Locally, we monitor sites in NW Portland, SE Portland, Oregon City, and Camas, Washington. Monitors survey for 2 hours or less around sunset. We ask you to commit to 3–4 survey nights during the course of the season.

Join us for the 2010 Naturescaping for Backyard Habitats Tour Sat., May 15, 11am–4pm

Have you ever wondered what a Naturescaped or Certified Backyard Habitat looks like? Are you looking for ideas that you could use in your own yard? Well, now is your chance.

On May 15th you can attend the Naturescaping for Backyard Habitats Tour, brought to you by the Backyard Habitat Certification Program and East Multnomah Soil and Water Conservation District's (EMSWCD) Naturescaping program. You can enjoy behind-the-scenes access to over 10 Certified Backyard Habitats — tour the yard, chat with our garden hosts, and get great ideas on how to naturescape your own yard to create great backyard habitats.

Naturescaping is the practice of designing a landscape so that it reduces water use, stormwater runoff, and pollution without sacrificing splendor. The practice focuses primarily on native plants, helping you to choose the best ones for your particular setting and needs. Native plants are recommended because they are adapted to our soil and climate so they need relatively little or no watering, fertilizing, or care once established. They are also less susceptible to common garden pests and diseases, and they attract a variety of native insects, birds, and butterflies.

All yards on this self-guided tour are Gold or Platinum Certified Backyard Habitats, which means your hosts have naturescaped with native plants, have removed invasive plants, and are increasing their wildlife stewardship and stormwater management on-site.

Interested in attending? **Pre-register online starting Monday, April 19 at www.emswcd.org.**

Approximately 2 weeks before the tour you will receive your tour packet via email. Information you need about the tour, including garden descriptions and directions, will be included in the packet. Pre-registration is required and space is limited.



Get ideas for your yard from Certified Backyard Habitats. © Kathy Shearin, EMSWCD

Brought to you by Audubon Society of Portland, East Multnomah Soil and Water Conservation District, and Three Rivers Land Conservancy.

Do you want your yard to be a Certified Backyard Habitat?

Then sign up now for the Backyard Habitat Certification Program. We can help provide resources and recommendations to help you on your way. If you have already done the work, that's great! We would love to come by and get you certified today. Sign up at www.audubonportland.org/backyardwildlife/backyardhabitat, or contact Karen Munday at kmunday@audubonportland.org or 503-292-6855 ext.122.



Wildlife Care Center

Meet Lillie, Our Newest Education Bird!

by Deb Sheaffer, WCC Operations Manager

"Lillie," a female American Kestrel, was named after Lillian Post Eliot, our first wildlife rehabilitator! Mrs. Eliot, the wife of Portland Audubon's first sanctuary caretaker, took in sick and injured birds in the 1930s and 1940s.

Lillie came to us as a fledgling in September 2009. Unfortunately she had been raised in captivity and wasn't given an appropriate diet. Malnutrition resulted in soft, rubbery bones and a fractured jaw. She responded well to treatment in the Wildlife Care Center, but was left with a deformed jaw. Sadly, unable to survive on her own in the wild, she must live the rest of her life in captivity.

Lillie shares a cage with Jack Sparrowhawk, our male Kestrel Education Bird. Kestrels are one of the few birds of prey whose gender can be determined by coloration. The male has bluish-slate gray on top of his head with a chestnut crown and bluish-slate gray wings. The back is almost completely chestnut. Females lack the bluish-gray on the head and wings that the male has and the back, wings, and tail are barred with chestnut and dark brown.

The smallest and most common falcon, the American Kestrel has a large range throughout the western hemisphere. They are found above the Arctic Circle and south through Canada, the United States, Mexico, Central America, and parts of South America. Their prey is mostly small rodents, reptiles, insects, and an occasional small bird. Most American Kestrels are migratory, but many of those in the Willamette Valley remain here year round.



Lillie © Portland Audubon

Come meet Lillie at the Wildlife Care Center daily, 9am–5pm!

To help Portland Audubon care for Lillie, Jack, or other Education Birds, you can "Take a Wild Thing Under Your Wing." When you sponsor one of the Audubon Society of Portland "Wild Things," you are providing care and treatment for

our resident native birds and helping the sick, injured, and orphaned native wild animals that are treated in our Wildlife Care Center. See our website for details. You can visit the WCC daily between 9am and 5pm.

Educational Trips & Tours

These trips are popular. We recommend that you book early.

NEPAL

February 10–23, 2011 (tentative dates)

Nepal... an ancient land of terraces, alpine meadows, and unsurpassed mountains. It's also the land of over 800 species of birds! Join Portland Audubon on this 2-week tour of Nepal as you bird some of its most famous national parks and many locations well off the tourist trail.

The first leg of our journey will take us to **Koshi Tappu Wildlife Reserve** in the far east of the country. Here we'll explore this small but rich riverine ecosystem in search of such species as the **Bengal Florican**, **Sarus Crane**, **Ibisbill**, and **Greater Adjutant**, to name just a few. This park was set aside in 1976 to protect the **Arna** (the **Wild Water Buffalo**), and we hope to encounter this majestic species as well. We'll also keep an eye out for **Wild Boar**, the **Chital (Spotted Deer)**, **Nilgai**, massive crocodiles, and the exotic freshwater **Gangetic Dolphin**.

The next destination is **Chitwan National Park**, one of the last strongholds for the endangered **Great One-horned Rhinoceros**. We'll explore the park on foot, by jeep, and even by Elephant in search of this impressive animal. Chitwan also offers much in the way of birding. Of its over 500 species, we'll keep a special look out for the **Painted Snipe**, **Black Ibis**, **Blue-bearded Bee-eater**, and **Stork-billed Kingfisher**, all of which we encountered here on our trip in 2010. We'll have 3 full days to explore the park's forested and grassland habitats.

Just south of Kathmandu we'll travel into the forest of **Phulchowki** and visit the **Godavari Botanical Gardens**, where mixed-species flocks present themselves so rapidly the birding becomes fast and furious, but fun for both the novice and expert.

We'll end the trip with 2 nights in **Kathmandu**, giving you a day and a half to explore this rich and wonderful city. You may choose to go on a guided tour of its temples or simply peruse the vast markets on your own. Either way, Kathmandu offers an unforgettable experience.

All trips fill on a first-come, first-served basis. **Fee includes:** all lodging (based on double occupancy), all meals except some dinners, internal air and all ground transportation, all park and guide fees, and the services of your leaders. A portion of your fee is a tax-deductible contribution to Portland Audubon. **Fee does NOT include** airfare to and from Nepal.



Great One-horned Rhinoceros

Fee: \$3965 member (tentative) / \$4265 non-member (tentative)
Deposit: \$1900 required to secure your place
Group size: 12 participants
Leader: Dan van den Broek

For more information or to register for this trip, contact Dan at dvandenbroek@audubonportland.org or 971-222-6105.

Extensions to the Nepal Trip

At the conclusion of this trip, you may choose **one** of the following extensions:

Mt. Everest Trek: Spend 6 days trekking in the region near Mt. Everest Base Camp. This is not designed as a birding extension but rather as an adventure that will give you an opportunity to experience the raw beauty of the Himalayas. Tentative fee: \$1495 for 6 days and 7 nights.

— or —

India: This trip to southern India is designed for the birder who would like to add as many species to their list as possible while they're in this corner of the world. We will focus on finding many of the endemic species of the Western Ghats. Chances to see the rare **Bengal Tiger** are also good. A visit to the **Taj Mahal** is included. Tentative fee: \$1845 for 8 days and 9 nights.

Spaces may still remain in these trips!

Contact Steve Engel at sengel@audubonportland.org or 971-222-6119 to inquire. See full trip descriptions at www.audubonportland.org/trips-classes-camps/adult.

Malheur Foray

May 26–31

\$645 members / \$695 non-members
Leaders: Steve Robertson & Kirk Hardie

Bird the Badlands (North Dakota)

June 3–10

\$1195 members / \$1395 non-members
Leader: Steve Engel

Birding the Basin

June 23–27

\$645 members / \$695 non-members
Leader: Dan van den Broek

Wildflowers & Birds of Steens Mountain

July 21–25

\$645 members / \$695 non-members
Leaders: Steve Engel & Sherry Spencer

Peru

September 18–30

\$2995 members / \$3295 non-members
Leaders: Steve Robertson & Dan van den Broek

Galapagos

Sept. 30 – Oct. 6

\$3295 members / \$3595 non-members
Leader: Dan van den Broek

2 spaces only

Australia

November 6–20

Fee: \$3895
Leader: Steve Robertson

Tasmania

November 20–28

Fee: \$1975
Leader: Steve Robertson

BIRDING FROM Yosemite to Lake Tahoe

September 27 – October 2, 2010

Join Portland Audubon on a tour of Yosemite's majestic waterfalls and scenic landscapes, and experience the beautiful sapphire-blue waters of Lake Tahoe after the rush of the summer season.

Our journey begins in Sacramento, from which we head to Merced National Wildlife Refuge where we will search for early-arriving **Sandhill Cranes** before traveling south to Yosemite National Park. Covering 1,169 square miles of the Sierra Nevada, Yosemite is one of the country's most popular national parks. We'll explore the Yosemite Valley as we search for **Pileated and Acorn Woodpeckers**. Near Glacier Point we'll search for **Sooty Grouse** and **Clark's Nutcracker** while also spying views of Half Dome. On our way over Tioga Pass, we'll hike into the Tuolumne Grove of **Giant Sequoias** and search for **White-headed Woodpeckers**. Tuolumne Meadows will give us a chance to find the rarest of the park's resident birds, the elusive **Great Gray Owl**. In the rocky alpine environment of Tioga Pass, we will search for the **Gray-crowned Rosy-Finch**.

Over the crest of the Sierra Nevada, we will drop into the western edge of the Great Basin region, where incredible numbers of birds utilize the enormous, alkaline **Mono Lake**. Tens of thousands of **Eared Grebes** will cover the



Mono Lake © Kirk Hardie

lake and flocks of thousands of **Wilson's and Red-necked Phalaropes** are also possible.

Lake Tahoe is the largest alpine lake in the United States and is renowned for its blue waters. While cruising on the paddleboat *Tahoe Queen* to Emerald Bay, we will search for **Bald Eagles** and any vagrant waterbirds out on the lake. We will also visit the Thunderbird Lodge Historic Site to learn about George Whittell, an esoteric businessman who played an important role in keeping the east shore of Lake Tahoe largely undeveloped. Other birds expected in the Tahoe Basin are **Band-tailed Pigeon**, **Cassin's Finch**, and **Clark's Nutcracker**, among many others.

This trip promises to provide spectacular scenery as well as great birds. Join us as we experience the beautiful Sierra Nevada from the California foothills to the east slope.

All trips fill on a first-come, first-served basis. **Fee includes:** all lodging (based on double occupancy), all meals except dinners, all ground transportation, and the services of your leaders. A portion of your fee is a tax-deductible contribution to the Audubon Society of Portland. **Fee does NOT include** airfare.

Fee: \$995 members / \$1295 non-members
Deposit: \$500 required to secure your place
Group size: 10 participants
Leader: Kirk Hardie, former Audubon staff member and current president of Redtail Environmental Education

Contact Steve at sengel@audubonportland.org or 971-222-6119 for information or to register.



Half Dome at Yosemite © Kirk Hardie

HOW TO REGISTER

For more information, go to www.audubonportland.org/trips-classes-camps.

Trips & Classes

Adult Classes

1. **NEW** — register and pay online! Visit class description on our website.
2. **OR** — contact Steve Engel via phone or email to be put on the roster, then make your payment as soon as he confirms availability. Only your payment holds your spot.
3. **Mail your check** payable to Audubon Society of Portland **or call** with your credit card information.

Educational Trips & Tours

1. Phone or email to request a registration packet for the trips of interest.
2. Complete and sign the **Registration / Waiver Form** and return it with the **required deposit**.
3. We'll contact you with **confirmation of payment and further details**.

Contact: Steve Engel, Adult Education Coordinator
Email: sengel@audubonportland.org
Phone: 971-222-6119

Mail: Audubon Society of Portland
 5151 NW Cornell Rd.
 Portland, OR 97210

Credit Card Payment: We accept VISA, MasterCard, and Discover. A 3% processing fee is added to each transaction. Include card number, expiration date, and billing address, or call Steve Engel and pay over the phone.

Butterflies of the Deschutes

April 16 (Fri), 6pm: Class in Heron Hall
April 17 (Sat), 10am-2pm: Field Trip (meet at Deschutes River)

Join the author of *Butterflies of the Northwest*, **Bill Neill**, for a class and field trip focused on his favorite subject. Friday's introductory class will prepare you for the next day's outing at the Deschutes River area (meet at Deschutes River). We may see more than a dozen species of butterfly patrolling their flyways, courting and mating, and stopping to sip nectar and wet sand.

Fee: \$35 members / \$45 non-members

Class-only option: \$10 members / \$15 non-members

Field Trip limited to 10 participants.

Pre-registration is required.

Birding By Ear — Migrant Birds

May 10 & 24 (Mon), 7pm-9pm: Classes in Heron Hall

May 16, 23, 30 (Sun), 7am-10am: Field Trips

Taught by **Laura Whittemore**, this class will focus on the newly arriving migratory songbird species such as Orange-crowned Warbler, Black-headed Grosbeak, Lazuli Bunting, Swainson's Thrush, and Western Tanager. Familiarity with resident species is required, as the class will focus on songs of migratory songbirds.

Fee: \$75 members / \$85 non-members

Class size: 14 participants

Participants sign up for all 2 classes and 3 field trips.

Pre-registration is required.

Oregon Hot Spots: Tillamook Bay

May 13 (Thur), 7pm-9pm: Class in Heron Hall

May 15 (Sat), 8am-5pm: Field Trip

Rocky headlands, jetties, mudflats, woodlands, freshwater ponds, wet meadows, sandy beaches: the area around **Tillamook Bay**, an Oregon Important Bird Area, has it all. With so many different habitats so close together, this area produces a great variety of birds — from **American Dipper** to **Caspian Tern** to **Wrentit** — on a single daytrip from Portland. Join *Birding Oregon* author **John Rakestraw** for an evening session to learn about the best birding spots and an identification review of the expected bird species. Then on Saturday we're off to the coast to bird these sites, with transportation provided by Portland Audubon.

Fee: \$75 members / \$85 non-members (transportation provided)

Class-only option: \$10 members / \$15 non-members

Field Trip limited to 11 participants.

Forest Birds: Chickadees, Nuthatches, Wrens, Kinglets

May 18 (Tue), 7pm-9pm

Chickadees, nuthatches, wrens, and kinglets frequent backyard feeders and fill the forests with song. Tonight **Harry Nehls**, local expert and author of *Familiar Birds of the Pacific Northwest*, shares his knowledge of this group of birds. Topics include identifying forest birds, common behaviors, habitats, and seasonal occurrence. The evening includes slides, handouts, and discussion.

Fee: \$10 members / \$15 non-members

This class is FREE for volunteers.
Pre-registration is required.

Beginning Birding II

June 13 & 20 (Sun), 8am-11am

June 26 (Sat), 6am-1pm

Laura Whittemore offers a late spring Beginning Birding II class, perfect for graduates of her popular classes. This **three-field-trip** class will focus on taking your birding skills to the next level. Participants should have some prior birding experience. This is an opportunity to spend more time in the field learning bird groups, songs and calls, habitats, and field marks — and to take on the ID challenges that pop up out of the bushes, **like freshly fledged juvenile birds!** Class consists of two local field trips (8am-11am) and one trip by van (6am-1pm). Transportation provided by Audubon for June 26 only.

Fee: \$75 members / \$85 non-members

Class size: 12 participants

Pre-registration is required.

Oregon Hot Spots: Larch Mountain

June 24 (Thu), 7pm-9pm: Class in Heron Hall

June 26 (Sat), 6am-Noon: Field Trip

A mosaic of mature forests and clearcuts, **Larch Mountain** provides access to mountain birds close to Portland. Join *Birding Oregon* author **John Rakestraw** for an evening session to learn about the best birding spots and an identification review of expected species. On Saturday we will start at the summit and work our way down, looking for **Hermit Warbler**, **Red Crossbill**, **Sooty Grouse**, **Northern Pygmy-Owl**, **Varied Thrush**, and other forest specialties. The field trip will involve moderate walking with significant elevation gain.

Fee: \$65 members / \$75 non-members (transportation provided)

Class-only option: \$10 members / \$15 non-members

Field Trip limited to 12 participants.

REGISTER FOR SUMMER CAMPS TODAY!

For descriptions and prices, go to our Summer Camp webpage at www.audubonportland.org, where you can also register online and pay by credit card or e-check. Or register in person at 5151 NW Cornell Road, Portland, OR 97210. Spaces will no longer be saved without payment. Questions? Call Sarah Swanson, Camp Director, at 971-222-6120.

AUDUBON 2010 SUMMER CAMP SCHEDULE

GRADES ENTERING:	1ST	2ND - 3RD	4TH - 5TH	6TH - 8TH	9TH - 12TH
WEEK 1	JUNE 28 - JULY 2 THINGS WITH WINGS	WILD ART ADVENTURE	JR. WILDLIFE VET 102 SESSION 1 BIRDZILLA	FIRE AND ICE JUNE 27-JULY 2 · SUN-FRI	
WEEK 2	JULY 5-9 ANIMAL HOSPITAL	BACKYARD BIRDS	SKETCHING FROM NATURE	HERPETOLOGY 103	BELIZE ADVENTURE JULY 6-16 · TUES-FRI
WEEK 3	JULY 12-16 FROGS AND FRIENDS	JR. WILDLIFE VET 101 SESSION 1 WATER WONDERS ART	STAYIN' ALIVE OVERNIGHT WED-FRI	FIELD ORNITHOLOGY SAN JUAN 1 JULY 11-16 · SUN-FRI	
WEEK 4	JULY 19-23 TRACKS AND SNACKS	JR. WILDLIFE VET 101 SESSION 2	NATURE PHOTOGRAPHY	WILD IN THE CITY	
WEEK 5	JULY 26-30 CREEPY CRAWLERS	MEGA MAMMALS BERRY BERRY FUN 1	HERPETOLOGY 102	OPAL CREEK 1	SAN JUAN 2 JULY 26 - AUG 1 · MON-SUN
WEEK 6	AUGUST 2-6 ANIMALOLOGY	ALL ABOUT BUGS HERPETOLOGY 101	OPAL CREEK 2	WORLD OF WATERCRAFT OVERNIGHT THURS-FRI	
WEEK 7	AUGUST 9-13 PREDATORS OF THE FOREST	JR. WILDLIFE VET 101 SESSION 3 NATURE DETECTIVES	BERRY BERRY FUN 2	SAN JUAN 3 AUGUST 8-13 · SUN-FRI	
WEEK 8	AUGUST 16-20 RAPTOR RAMA	HIT THE TRAIL	HIDDEN HIKES OVERNIGHT THURS-FRI	FOREST ODYSSEY OVERNIGHT THURS-FRI	DESTINATION: GLACIER AUGUST 15-21 · SUN-SAT
WEEK 9	AUGUST 23-27 WET AND WILD	PORTLANDIA	JR. WILDLIFE VET 102 SESSION 2	FIRE, STICKS & STONES	
WEEK 10	AUGUST 30 - SEPTEMBER 3 GNOME HOMES	CREATURE FROM THE PACIFIC	HOOD TO COAST CUISINE	JR. WILDLIFE VET 103 WAYS OF THE ANCIENTS AUG 29-SEP 3 · SUN-FRI	

= ONSITE = EXCURSION = MOBILE ADVENTURE = MARMOT CABIN

Sanctuaries News

Balch Creek Bridge to be Replaced April 22–27

by Tom Costello, Sanctuaries Director

Spring seems to have arrived a little early this year and we will be following suit by beginning our trail maintenance season a little early — beginning this month with the replacement of the footbridge over Balch Creek. While the decking and railing of the bridge were replaced about 15 years ago, the log timbers supporting the bridge are significantly older and quickly approaching the end of their service life.



Original Balch Creek Bridge circa 1938 © Audubon Archives

The project is being driven by the 5th grade teachers and parents at Forest Heights Elementary School. The 5th grade classes at Forest Heights Elementary have been participating in our Education Department's on-site, in-classroom, and field trip programs regularly for the past several years. This year the teachers and parents selected our bridge replacement project as their annual legacy project. The students and their parents have been actively raising money and soliciting donations for the project. To date their efforts have secured a generous donation of lumber from Patrick Lumber as well as funds to cover the remaining materials and expenses for the bridge.

While the 5th graders are a little young to assist with the actual bridge building, they will be volunteering to stain and preserve the new wood bridge with a nontoxic natural oil product as well as helping to revegetate the areas disturbed during the project along the creek. They have also taken class time to visit the sanctuary in February and assist with our ongoing ivy eradication efforts. It is a special

experience to work with a group of students, parents, and teachers so dedicated to lending a hand and making a difference.

The bulk of the bridge work will be performed **Saturday, April 24 during our fifth TogetherGreen volunteer event.** We will carry down the precut lumber for the new bridge, dismantle the old bridge, and haul all of the debris back up the hill on this day. If time permits we will begin installation of the new bridge by setting the large timbers. A small cadre of experienced volunteers will complete the installation April 25–27.

Please note that all of the trails in the Pittock Sanctuary will be inaccessible April 24–27.

Nature Store Highlights

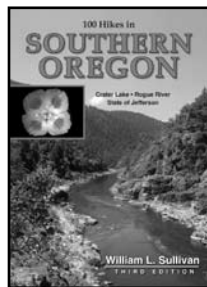
Author Events at the Nature Store

by Sally Loomis, Book Buyer

We have three exciting evenings planned for April and May, and hope that you have the opportunity to join us. All events are free and start at 7:00 p.m. in Heron Hall.

William Sullivan on April 16th!

Longtime Audubon favorite hiking authority William Sullivan returns to visit us on Friday, April 16th. He'll be featuring **100 Hikes in Southern Oregon, 3rd Edition** (Navillus Press, \$16.95). Taking us on a slideshow tour of new trails he discovered while researching this just-released edition, we will find hidden beaches on the Illinois River, explore a Darlingtonia bog at Eight Dollar Mountain, backpack in Northern California's Trinity Alps, and find out what new trails are being built at Crater Lake. As always, Sullivan spices his talk with notes on each area's geology, wildlife, and history.

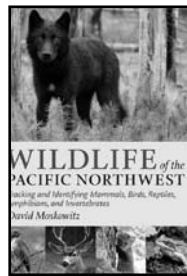


© Timberline

Arctic Circle centers on the annual trek of caribou from the Yukon and Alaska in early April to a small corner of Alaska to give birth to their young. The journey — an ordeal of mountains, blizzards, wolves, scant forage, and river crossings with ice chunks the size of pickup trucks — is the longest migration of any land animal on earth. Despite formidable obstacles, the females find their way to the calving grounds, deliver their calves in June, and then begin their long trip home. Reid sets out to join them on their journey, seeking the rare, fragile beauty of the entire Arctic ecosystem.

David Moskowitz on May 27th!

Finally, on Thursday, May 27th, we present David Moskowitz, author of the newly published **Wildlife of the Pacific Northwest: Tracking and Identifying Mammals, Birds, Reptiles, Amphibians, and Invertebrates** (Timber Press, \$25.95). The book includes illustrated descriptions for more than 180 mammals, birds, reptiles, amphibians, and invertebrates most common in Washington, Oregon, British Columbia, northern California, Idaho, and western Montana. With more than 460 photographs, hundreds of scale drawings, and more than 90 distribution maps, it belongs in every pack and is a must-have for nature lovers of all ages and skill levels.



© Steve Smith

David Moskowitz is a professional wildlife tracker, photographer, and outdoor educator. The lead instructor for wildlife tracking programs at Wilderness Awareness School in Duvall, Washington, he is a gifted educator and an engaging public speaker who blends his deep knowledge of these subjects with a sincere love of teaching and engaging others with the natural world.

Just released!

The 4th edition of **Peterson's Field Guide to Birds of Western North America** is available (Houghton Mifflin, \$19.95), now with range maps accompanying species descriptions! A new edition for Eastern species is also available.

SPECIAL SALE!
Washington Pottery Birdbaths
at Native Plant Sale May 15 & 16

Native Plant Sale

Continued from page 1

As always, a fine team of knowledgeable volunteers will also be on hand to help answer any and all of your botanical questions. This year we will also feature an **information booth with staff from our Backyard Habitat Certification Program.** In addition to all the great information on native plants, you can dig up the big picture on naturescaping, rain gardens, invasive plant removal, and more. Turn your own yard into a wildlife sanctuary!

A wonderful selection of books on native plants, wildlife, and naturescaping will be available at our Nature Store. Russell Link's **Landscaping for Wildlife in the Pacific Northwest** is a great introductory text for those new to naturescaping. The **Encyclopedia of Northwest Native Plants** by Kathleen Robson, Alice Richter, and Marianne Filbert provides comprehensive information on the flora of our region. For those who really want to explore the complex ecological systems that native plant communities support, I recommend Douglas Tallamy's **Bringing Nature Home: How You Can Sustain Wildlife with Native Plants.**

As a warm-up to the sale, join **Judy BlueHorse Skelton** in Heron Hall on **Tuesday, May 11 at 7pm** for a free Nature Night presentation on our relationship with native plants as food, medicine, and more. Historically, native plants were intricately woven into the fabric of our daily lives as medicine and food, shelter and tools. Today, most of us live in a home framed with the wood of the Douglas Fir, herbal and naturopathic medicine is well established in the mainstream, and native plants have become integral tools in sustainably managing stormwater runoff and reducing the load on our urban sewer infrastructure. Continuing to re-establish our deep connection with native plants is a key component for us in "developing healthy lifeways." Among other courses, Judy teaches "Indigenous Perspectives and Practices for a Sustainable Future" at Portland State University.

Audubon Society of Portland gratefully acknowledges these thoughtful gifts:

In Memory

Mearl Findley
John & Kathy Lewis

Jan Myers
Janis Bailey
Nancy Stark

Herman "Dutch" Schneider
Wilfried & Deanna Mueller-Crispin

Catherine West
Rebecca Ryder & Don Troen

In Honor

Cynthia Sulaski
Nancy J. Cushwa
Fran Daggett
Nancy J. Doty-Drummond

You can honor a special person with a gift to Audubon Society of Portland. Your gift will help fund a future of inspiring people to love and protect nature. You can make an Honor or Memorial gift online at www.audubonportland.org or by calling 971-222-6129. A songbird card acknowledging your thoughtful gift will be sent to the honoree or family.

Wish List & Thank you's

Thank you to:

- Mary Haas for one Water Wand
- Marianne Nelson for a framed Great Blue Heron picture with calligraphy for door prize at Volunteer Banquet

Our Wish List:

For Education:

Laptop computer • Powerpoint Projector

For Sanctuary:

Loppers • Hand saws • Work gloves
Watering wand hose attachment

For Wildlife Care Center:

Science Diet Kitten Growth • Kiddie Pools
Dawn Dishwashing Detergent • Welding Gloves
Camper/Trailer • Untreated Wood: 2x4, 4x4, 4x8

If you can donate these items, please first contact Audubon Society of Portland at 503-292-6855 ext. 102, Mon-Fri, to arrange a time for delivery/pick-up.

Familiar Robins Cheerily Herald Spring

Of all the different kinds of birds that can be found in North America, few can compete with the **American Robin** in popularity. Its colorful and distinctive song and bright easy-to-identify plumage would make it a favorite in any case, but its liking for the savanna-like habitat humans build for themselves about their homes brings this species close to everyone. They are not overly friendly but they put up with human follies better than most birds.



American Robin
© Steve Berliner

If everyone is so familiar with the American Robin, just how common is it? Prior to the sudden expansion of the Scrub-Jay throughout the Western Oregon lowlands during the 1950s, Robins were probably twice as common as they are now and were much more conspicuous. They could place their nests right out in the open and let their young flutter about without any cause for concern except for the local felines. Scrub-Jays changed all that with their taste for eggs and young birds.

Robins gather in large flocks during the winter months but seldom do the flocks exceed a few hundred thousand. Many go south to winter, but the remaining birds and those coming in from farther north keep the Oregon population quite high.

In early February many of the local nesting Robins return to their nesting territories and begin to call in their mates and locate a good spot for a nest. If the weather remains good and the food easy to get, some begin to nest almost immediately. Reports of eggs in the nest as early as the first week of March are on file, but it is usually into April before nesting begins in earnest.

While defending nesting territories, male Robins — like most other bird species — do crazy things. The most obvious is to set up a singing perch and sing the breeding song all the time and chase rival birds out of the territory. It is during this period when his mirrored image on a windowpane or an automobile hubcap will cause him to attack again and again, and often to keep it up throughout the nesting season.

This doesn't do him too much good and it usually is not appreciated by the human occupants living in the breeding territory, especially if the bird had just eaten. The birds often play with the neighborhood cat, harassing it and obviously attempting to keep it in confusion. When highly agitated it will attack humans as well, but this is rare.

Birds such as the Robin that have very large populations scattered everywhere often show a variety of abnormalities. This is most obvious when a bird appears in abnormal plumage. In Robins both melanism and albinism is prevalent. One would think that in the Northwest where the tendency is toward darker plumages that melanism would be regular, but it is quite rare and albinism is the tendency.

In the Portland area especially there is a long history of partial albinism but seldom is a pure albino reported. Partial albinism usually shows up as white patches or single white feathers scattered over the bird, or perhaps a white head or overall paleness with the normal coloration just visible. Most often the whitish feathers on one side of the body are matched by the same feathers on the other side of the body, forming a pattern.



Cranes courting
© levalleyphoto.com

On February 8 Ken Vanderkamp reported that a female **Anna's Hummingbird** was seen in Oaks Bottom sitting on a nest.

The spring movement of **Tree Swallows** reached the Portland area about February 15 this year. On February 26 Darrel Faxon spotted a **Barn Swallow** among the flocks at Jackson Bottom in Hillsboro. On February 6 Sumner Sharpe saw an early **Osprey** over Sturgeon Lake on Sauvie Island. Several have wintered in recent years in the southern Willamette Valley.

It has been a very good spring for **Say's Phoebes** in the Willamette Valley. On February 14 Paul Sullivan saw one near Carlton. Erik Knight saw one in Oaks Bottom February 23, and Louis Fredd reported one from Oregon City February 27.

Sandhill Cranes make conspicuous migrations over the Willamette Valley each spring and fall. Stefan Schlick spotted a flock over Canby February 14 and Martin Jaqua saw a flock right over Northwest Portland February 20. They will continue to move through March with the peak numbers on Sauvie Island during late March and early April. About 500 wintered in the Sauvie Island-Ridgefield NWR areas this year.

Sightings

It would seem that the mild open winter would have some effect on the birds, but they appeared to be in normal numbers with nothing overly unusual. Although there seemed to be quite a few flying insects, warbler counts were below regular numbers, while creepers and nuthatches were above normal. Kinglet numbers were quite low in January and February. Timing of the early spring movements appears normal.

The bright male **Hooded Oriole** wintering at a Gaston hummingbird feeder continued to be seen into March. On February 3 Gregor Garrett photographed a winter-plumaged male **Western Tanager** coming to his feeders in the St. Johns district.

On February 2 Carole Hallet reported a female **Rose-breasted Grosbeak** coming to her feeders south of Scappoose. On February 8 Scott Carpenter spotted **Sage Sparrow** at the entrance to the Shillapoo Unit near Vancouver Lake.

On January 27 Carole Hayden photographed an unusual male hummingbird coming to her Tigard feeders. Upon examination it appeared to be a hybrid **Anna's x Costa's Hummingbird**. Priscilla Christenson observed a hummingbird at her Beaverton feeders January 31 that appeared to be bright male **Ruby-throated Hummingbird**. Unfortunately no photos were taken.

Volunteer of the Month: Jean Baecher-Brown

by Tom Costello, Sanctuaries Director

Remember when this month's Volunteer of the Month, **Jean Baecher-Brown**, first began volunteering at Audubon in November 2007 because she was one of two or three regulars at our monthly work parties. These work parties, perhaps owing to the challenging and unforgiving nature of the tasks, have always been a hard sell on our volunteers. For me the few die-hards who braved the elements every month to help with our habitat restoration efforts deserved a little extra notice and commendation. It was always nice knowing we'd see Jean every month.



© Portland Audubon

A little over two years later it's nice knowing we'll see Jean here a lot more than once a month. As the Sanctuaries Program has evolved and grown over the past two years, Jean is always stepping up to fill another need. She attends our TogetherGreen Volunteer Events without fail; with the experience she has built up, she is helping to lead and mentor the newer volunteers at these events. She is always offering to come early and help set up, and she often sticks around late to make sure all the tools get cleaned and put away. Her tireless enthusiasm and can-do attitude is contagious — both for me and for the other volunteers.

In working with Jean over the past two years, I've noticed a couple of things. She always seems to be smiling and she is always eager to learn. She can often be found helping Greg Kurtz at our native plant nursery, where she has been honing her plant knowledge. And she's been able to put this knowledge to good use while volunteering at our annual Native Plant Sale, helping to keep our selection of plants stocked and to assist customers in finding what they are looking for.

This past year I was also able to talk Jean into joining the Sanctuaries Committee, where she once again has proven to be a tremendous help in planning our sanctuary restoration and volunteer efforts. While our long-standing committee members bring a lot of professional experience to our planning efforts, Jean adds to that balance with the perspective of an extremely active Audubon volunteer who attends every work party, experiencing the direct result of our planning efforts.

In addition to all of the amazing work Jean does in the Sanctuaries Program, she also regularly volunteers to lead sanctuary tours with our Education Program, and volunteers at Swift Watch, the Wild Arts Festival, and Raptor Road Trip. **Thank you for all of your hard work, Jean** — you are an inspiration for volunteers and staff alike.

Portland Audubon Calendar at a Glance

April

1 (Thurs).....Bird Song Walk (p.2)	12 (Mon).....Bird Song Walk (p.2)	21 (Wed).....Bird Song Walk (p.2)
2 (Fri).....Bird Song Walk (p.2)	13 (Tues).....Nature Night (p.10)	21 (Wed).....Audubon Outing (p.3)
3 (Sat)..... Audubon Outings (p.3)	13 (Tues).....Condor Zoo Lecture (p.12)	22 (Thurs).....Bird Song Walk (p.2)
4 (Sat)..... Nikon Weekend (web)	14 (Wed).....Bird Song Walk (p.2)	22 (Thurs).....Estate Seminar (p.11)
4 (Sun)..... Nikon Weekend (web)	15 (Thurs).....Bird Song Walk (p.2)	23 (Fri).....Bird Song Walk (p.2)
4 (Sun)..... Bluegrass Jam 12:30pm	15 (Thurs).....Board Ballot due 6:30pm	24 (Sat)..... Audubon Outings (p.3)
5 (Mon).....Bird Song Walk (p.2)	15 (Thurs).....Board Meeting 7pm	24 (Sat)..... Citizen Science (p.5)
5 (Mon).....Bird by Ear: Residents (web)	16 (Fri).....Bird Song Walk (p.2)	25 (Sun)..... Audubon Outing (p.3)
6 (Tues).....Birders' Night 7pm	16 (Fri).....Butterflies Class (p.7)	25 (Sun).... Bird by Ear: Residents (web)
7 (Wed).....Bird Song Walk (p.2)	16 (Fri).....Author Event (p.8)	26 (Mon).....Audubon Outing (p.3)
8 (Thurs).....Bird Song Walk (p.2)	16 (Sat)..... Butterflies Trip (p.7)	26 (Mon).....Bird Song Walk (p.2)
8 (Thurs).....Hummers Class (web)	17 (Sat)..... Audubon Outings (p.3)	27 (Tues).....Coyote Zoo Lecture (p.12)
9 (Fri).....Bird Song Walk (p.2)	18 (Sun).... Bird by Ear: Residents (web)	28 (Wed).....Bird Song Walk (p.2)
10 (Sat)..... Audubon Outings (p.3)	19 (Mon).....Bird Song Walk (p.2)	29 (Thurs).....Bird Song Walk (p.2)
11 (Sun).... Bird by Ear: Residents (web)	19 (Mon).....Bird by Ear: Residents (web)	30 (Fri).....Bird Song Walk (p.2)

May

1 (Sat).....Birdathon (p.1)	13 (Thurs).....Bird Song Walk (p.2)	24 (Mon).....Bird by Ear: Migrants (p.7)
1 (Sat)..... Audubon Outing (p.3)	13 (Thurs).....Audubon Outing (p.3)	25 (Tues).....Bird Song Walk (p.2)
3 (Mon).....Bird Song Walk (p.2)	13 (Thurs).....Tillamook Bay Class (p.7)	26 (Wed).....Bird Song Walk (p.2)
4 (Tues).....Birdathon (p.1)	14 (Fri).....Bird Song Walk (p.2)	26 (Wed).....Audubon Outing (p.3)
4 (Tues).....Birders' Night 7pm	15 (Sat)..... Audubon Outing (p.3)	26 (Wed).....Malheur Foray (web)
5 (Wed).....Birdathon (p.1)	15 (Sat)..... Naturescaping Tour (p.5)	27 (Thurs).....Bird Song Walk (p.2)
5 (Wed).....Bird Song Walk (p.2)	15 (Sat)..... Tillamook Bay Trip (p.7)	27 (Thurs).....Audubon Outing (p.3)
5 (Wed).....Audubon Outing (p.3)	15 (Sat).....Native Plant Sale (p.1)	27 (Thurs).....Author Event (p.8)
6 (Thurs).....Bird Song Walk (p.2)	16 (Sun).....Native Plant Sale (p.1)	28 (Fri).....Bird Song Walk (p.2)
7 (Fri).....Bird Song Walk (p.2)	16 (Sun).....Bird by Ear: Migrants (p.7)	29 (Sat)..... Audubon Outing (p.3)
7 (Fri).....Birdathon (p.1)	17 (Mon).....Bird Song Walk (p.2)	23 (Sun).....Bird by Ear: Migrants (p.7)
7 (Fri).....Author Event (p.8)	18 (Tues).....Bird Song Walk (p.2)	31 (Mon).....Bird Song Walk (p.2)
8 (Sat).....Festival of the Birds (p.2)	18 (Tues).....Forest Birds (p.7)	
8 (Sat)..... Family Adventure (p.2)	19 (Wed).....Bird Song Walk (p.2)	
8 (Sat).....Birdathon (p.1)	20 (Thurs).....Bird Song Walk (p.2)	
8 (Sat)..... Audubon Outings (p.3)	20 (Thurs).....Audubon Outing (p.3)	
10 (Mon).....Bird Song Walk (p.2)	20 (Thurs).....Board Meeting 7pm	
10 (Mon).....Bird by Ear: Migrants (p.7)	21 (Fri).....Bird Song Walk (p.2)	
11 (Tues).....Bird Song Walk (p.2)	21 (Fri).....Birdathon (p.1)	
11 (Tues).....Nature Night (p.10)	22 (Sat)..... Audubon Outing (p.3)	
12 (Wed).....Bird Song Walk (p.2)	23 (Sun).....Bird by Ear: Migrants (p.7)	
12 (Wed).....Birdathon (p.1)	24 (Mon).....Bird Song Walk (p.2)	

June

1 (Tues).....Bird Song Walk (p.2)
2 (Wed).....Bird Song Walk (p.2)
2 (Wed).....Audubon Outings (p.3)
3 (Thurs).....Bird Song Walk (p.2)
3 (Thurs).....Bird the Badlands (web)
4 (Fri).....Bird Song Walk (p.2)
5 (Sat)..... Peregrines & Pinot (p.12)

NATURE NIGHTS

Second Tuesday of the month from September to May. If you have a suggestion for a Nature Night presentation, contact Catherine at chalpin@audubonportland.org or 503-292-6855 ext. 129.

Free and open to the public!

Northern Pygmy-Owls

Tuesday, April 13
7pm • Heron Hall

Northern Pygmy-Owls are tough, mysterious little birds and are found in forests and woodlands throughout Oregon, including the Portland metro area. The Northern Pygmy-Owl has been on the Oregon sensitive species list, and remains a species of concern in Wyoming, New Mexico, Alberta, and British Columbia. For the past three years **John Deshler** has been studying the breeding biology and habitat selection of Pygmy-Owls right here in Portland, and these local data now represent the most robust information on the breeding and habitat preferences of this species. In addition, these data challenge many commonly held yet unsubstantiated claims about the species regarding habitat, clutch size, diet, and life history strategy, and thereby establish new conservation priorities for the species. Using video, photographs, sounds, and sound science, the breeding habits, habitat preferences, and life history strategy of Pygmy-Owls will be explored during this Nature Night presentation. Come learn about Oregon's smallest owl!

Human Relationships with Native Plants

Tuesday, May 11
7pm • Heron Hall

Join **Judy BlueHorse Skelton** for a Nature Night presentation on our relationship with native plants as food, medicine, and more. Historically, native plants were intricately woven into the fabric of our daily lives as medicine and food, shelter and tools. Today, most of us live in a home framed with the wood of the Douglas Fir, herbal and naturopathic medicine is well established in the mainstream, and native plants have become integral tools in sustainably managing stormwater runoff and reducing the load on our urban sewer infrastructure. Continuing to re-establish our deep connection with native plants is a key component for us in "developing healthy lifeways." Among other courses, Judy currently teaches "Indigenous Perspectives and Practices for a Sustainable Future" at Portland State University.



Pygmy-Owl © Don Baccus

Keeping You Informed while Walking Our Talk

Another step for wise resource management

Are you getting used to this yet? We're just into our schedule of producing eight issues of the *Warbler* for 2010, because we believe in managing our natural resources and conserving in our use of paper products. For the rest of the year, expect your *Warbler* on the following schedule:

April/May	September
June	October/November
July/August	December

Of course, our website will be one of your sources of all the latest news, events, trips, and classes. For the convenience of having information delivered directly to your email inbox, please sign up for our enews, **The BirdWord**, online or by sending your email address to tmiller@audubonportland.org.

If you want to get involved in our advocacy work, please join our action alert list, Audubon Conservation Team (ACT), by visiting www.audubonportland.org/issues/get-involved.

Join the Fun Through Portland Audubon's Online Community

Our Facebook fan page is a hub of activity! Become a fan and be a part of the fun at www.facebook.com/PortlandAudubon. We just held our first Facebook Fan Raptor Road Trip Photo Contest and the winner, Dawn Des Brisay, wins recognition with our 1,300 fans AND a \$25 gift certificate for our Nature Store. Please take a look at the Raptor Road Trip Album to see this winning photo. And, don't forget to follow us on Twitter at www.twitter.com/PortlandAudubon and join the chatter!

Welcome, New Members!

Portland Audubon is a force in conservation thanks to its strength in membership, standing together since 1902. We appreciate each and every one of our members and celebrate our membership by welcoming our new members monthly. Thank you for joining our vibrant and growing community!

Beth Ambard	Patricia Larson
Steve Appel	Erin Law
Sara & Alan Ark	Stephen Lindsay
Loba Azul	Janette Lockhart
Robert Baker	Donald Loveridge
William Baldwin	Tanja Lux
Barbara Balko & Paul Tratnyek	Patricia McQuillin
Cynthia & Brandon Barnett	Melanie Mitchell
Sara Boone	Julie Muller
Christine Broshar	Diane Nave
Emily DeCarlo	Lisa Nice
Chad Delany	Sheila Nyhus
Dianne Derse	April Obern
Dawn DesBrisay	Barbara O'Donnell
Thomas Dietz	Yoko Oishi
Jerry Dirnberger	Richard & Mary Ann Parker
Sharon & Jayde Donnelly	Carol & Burt Pattee
Traci Doyle	Sue & Bob Pierce
Ron & Kathy Ems	Virginia & Sherwin Reiff
Yonette & Kenn Fine	Janette Roberts
Joan Gould	Brian Rooney
Janice Grammer	Nathan Schlingmann
Helen Gross	Sofia Siegel
Lorraine Guthrie	Jennifer Stanley
Amy Heiden	Anne & Brian Talcott
Marie Helsby	Amy Tanska
Pamela Hill	Brian & Diane Terrett
Thomas Hohnstein	Lincoln Thomas & Deborah Pike-Thomas
Susann Holmes	Susan & David Vanthof
Peter Hvidsten	Kimberly Waara
Paul Jaussi	James & Sarah Weider
Jim Jeter	Eric West
Alycia & Nicholas Johnson	Jeffery Whittington & Patricia Depinto
Richard Jones	Jaime Wright
Monique & Kambiz Komeyli	Cynthia Zemaitis
Michael & Lisa Lafferty	
Deidre Lantz	

If you would like to join us or have any questions about membership, please contact Catherine at chalpin@audubonportland.org or 503-292-6855.

Dawn Martinez	Jennifer Puhl	A.J. Steffani
Joe Martinez	Becca Putnam	Paula Stewart
Peter Martu	Sherry Qian	Leisl Stientjes
Marcia Marvin	Sharon Ralston	Leslie Stiff Arm
Diane Mathers	Kristina Raum	Lucas Stiff Arm
Larry Maurin	Melissa Reich	Marilyn Stinnett
Chris May	Shelley Reynolds	Maggie Stock
Sam May	Josie Reznik	Nick Stockton
Carol McAllister	Reuben Rich	Ryan Stoller
Molly McAllister	Meg Richardson	Susan Stone
Sarah McCarty	Karly Ritter	Trudi Stone
Tiffany McClean	Doug Robberson	Renee Storey
Richard McCollom	Bob Rodgers	Ann Strader
Maryann McCormick	Ginnie Ross	Emily Strelow
Tiffany McGee	Sara Roth	Travis Stude
Kristin McHenry	Toni Rubin	Kathy Suito
Irene McIntosh	Abby Sage	Cynthia Sulaski
Brittany Mehaffie	Scott Salzwedel	Paul Sullivan
Kathryn Menard	Sherie Salzwedel	Molly Sultany
Jenna Mendenhall	Orlando Sanchez	Kendra Sundt
Bonnie Messinger	Lee Savinar	Drew Swayne
Pam Meyers	Cathy Schar	Lynn Sweeney
Rick Meyers	Sarah Schmidt	Nanci Tangeman
Bob Michaelis	Bob Schmitt	Kristina Tangney
Anna Michel	Kristin Schoenborn	Carly Tester
Karen Miller	Jean Schoonover	Kendra Tester
Frank Junga	Aaron Schwindt	David Tetric
Diane Kearns	Brian Scott	Bob Thompson
Nikki Kelly	Kate Scott	Carolyn Thompson
Mary Ellen Kenreich	Marilyn Scott	Andrew Tillinghast
Leanne Kerner	Tricia Sears	Fiona Toland
Johanna Khan	Alice Sellers-Subocz	Rebecca Toland
Darren Klein	Sara Serna	Jo Trewartha
Cecilia Knapp	Michele Shapiro	Dena Turner
Joan Koessler	Rosemary Shiolas	Dan Utman
Hannah Kornbrath	Wendy Shoemaker	Lisa Utz
Kathleen Moon	Bonnie Shoffner	Laurie Vail
Erin Moore	Jackie Shorr	Cecile Valastro
David Koskamp	Alexa Simone	Ken Vanderkamp
Lei Kotynski	Mandy Sims	Susan VanVoorhis
Gala Krooss	Laurie Skinner	Elisabeth Varga
Mariha Kuechmann	Mike Skinner	Brian Vaughn
Susette Lane	Pamela Slaughter	Celeste Vaughters
Bob Langan	Marsh Sly	Alayna Vincent
Margot Langan	Anne Smith	Cindy von Ofenheim
Lauren Lapinel	Barbara Smith	Megan Waggoner
Patricia Larson	Bernie Smith	Kelli Walker
Carole Leavens	David Smith	Willow Walker
George Leavitt	Jane Smith	David Watts
Wendy Lee	Maureen Smith	Nicholas Wegener
William Leler	Max Smith	Dolores Weisbaum
Bob Liddell	Carolyn Snegoski	Shelby Weston
Tara Lilley	Jennifer Snyder	Kristin Wheary
Chelsea Lincoln	Reggie Snyder	Debi Whitcomb
Natasha Lipai	Allan Solares	Laura Whittemore
Eric Liskay	Luke Solares	Wendy Wiles
Ann Littlewood	Mary Solares	Briana Williams
Alan Locklear	Jackie Sparks	Rebecca Williams
Glenn Luft	Carol Otis	Bob Wilson
Rie Luft	John O'Toole	Dean Wilson
Julie Luse	Jonna Papaefthimiou	Jackie Wilson
Katherine Lux	Peter Paquet	Phyllis Wolfe
Barbara Macomber	Paula Squire	Alexa Woolen
Jerome Magill	Tawni Squire	David Wynn
Amber Magnus	Kelly Payne	Marina Wynton
Becky Magnuson	Micki Stauffer	Shannon Young
Linda Magnuson		
Mark Magnuson		
Mercedes Maltese		
Caroline Mann		
Jane Manson		
Ashley Marchi-Young		
Molly Marks		
Louise Martell		
Patty Martin		
Missy Martin		

We would also like to thank the following veterinary hospitals that volunteer their time and services:
Avian Medical Center
Dove Lewis Emergency Animal Hospital
Gladstone Veterinary Clinic
Rock Creek Veterinary Hospital
Susan Kirschner, The Animal Eye Doctor

Thank You, Audubon Volunteers!

by Deanna Sawtelle,
Volunteer Coordinator

April is "Volunteer Month," and the Audubon Society of Portland would like to thank all our volunteers who contribute their valuable time and talents. Their efforts help us fulfill our mission to inspire people to love and protect nature.

We are deeply indebted to the individuals who give graciously of their energy to ensure that people and native wildlife flourish together. We would not be able to accomplish the work we do without their help. This list includes Portland Audubon's current volunteers who dedicate a substantial amount of time, weekly or monthly. We also appreciate the many volunteers who help out on annual events and one-time projects, though space limitations prohibit us from listing them here.

Katie Acheff	Lois Bode	Joshua Cerra
Pamela Aldrich	Michelle Bolin	Connie Chapman
Nichole Alvarado	Jackie Bollinger	Robert Chappell
Joan Amero	Rachael Bortin	Vee Chilberg
Jennifer Amie	Mary Bourret	Bea Close
Harriet Anderson	Christine Broshar	Don Cogswell
Keelin Anderson	April Brown	Sharon Cogswell
Julia Apple	Brian Brown	Pat Cole
Joanna Arrillago	Paulette Busch	Elizabeth Collins
Ginnie Astrue	Mary Bushman	Corinne Conway
Charles Aubin	Hana Buttrel	Julie Corbett
Katherine Averill	Kathy Buttrel	Matthew Corbin
Loba Azul	Luanne Bye	Britta Countryman
Christopher Babin	Celia Cage	Jocelyn Cox
Jean Baecher Brown	John Cagle	Trish Cox
Matt Baird	Leslie Cagle	William Cox
Robert Barncord	Kathy Campbell	Linda Craig
Jeff Baxter	Lacy Campbell	Pat Crane
Ryan Beane	Pat Campbell	Dan Craver
Kathy Beekel	Laura Canida	Brenda Cronkhite
Kathy Bennett	Tyler Carlson	Nancy Jane Cushing
Lani Bennett	Robin Carpenter	Fran Daggett
Karen Berry	Sue Carr	Susan Dale
Jean Bessey	Laura Carson	Tyee Damewood
Helen Beum	Claire Carter	Angela Daufel
Susan Bexton	Alice Cascorbi	Marilee Davies
Agni Bhatt	Jacqueline Case	Gary Davis
Dhiraj Bhatt	Christine Caurant	Ray Debord
Rohan Bhatt	Carl Cecka	Tony DeFalco
Robyn Bluemmel	Tanya Cecka	Michelle Degnin

Bonnie Deneke	Kristina Gifford	Ken Ivey
Andre Dengo	Marlene Gleason	Rahul Jain
Jennifer Devlin	Jenny Goetz	Dawn Jansen
Katharine Diack	Carol Goldberg	Robin Jensen
Martin Dick	Marshall Goldberg	Betsy Jeronen
Mary Dickerson	Caitlin Goldie	Jane Johnson
Jennifer Dickinson	Peg Goldie	Michelle Johnson
Laura Dickinson	Robbie Goldie	Dennis Jones
Michele Dickson	Pat Gorman	Jenny Jones
Susan Dietderich	Denny Graham	Frank Junga
Mary Doak	Jeff Graham	Diane Kearns
Ann Dodds	Chris Grant	Nikki Kelly
Kathy Dodson	Don Grant	Mary Ellen Kenreich
Collette Doman	Thom Green	Leanne Kerner
Preston Doman	Laura Greene	Johanna Khan
Steve Doman	Mark Greenfield	Darren Klein
Steph Doorly	Enid Griffin	Cecilia Knapp
Aleks Dreska	Josie Griffin	Joan Koessler
Kevin Duff	Eric Gropp	Hannah Kornbrath
Danni Duggan	Anne Gropp-Sammis	David Koskamp
Christopher Duran	Carol Gross	Lei Kotynski
Anne Eakin	Gala Gross	Gala Krooss
Lacie Eastick	Wink Gross	Mariha Kuechmann
John Edwards	Austin Gutierrez	Susette Lane
Katy Ehrlich	Jess Gutierrez	Bob Langan
Ron Escano	Peg Hackenbruck	Margot Langan
Carole Evans	Kelly Hagen	Lauren Lapinel
Gregg Everhart	Nan Haigwood	Patricia Larson
Kaye Exo	Carole Hallett	Carole Leavens
Joshua	Rosie Hamilton	George Leavitt
Faber-Hammond	John Hammerstad	Wendy Lee
Anthea Fallen-Bailey	Margaret Hancock	William Leler
Kat Fiedler	Rebecca Hancock	Bob Liddell
Diane Field	Dawn Handy	Tara Lilley
Bob Fields	Kevin Hanny	Chelsea Lincoln
June Fields	Jane Hartline	Natasha Lipai
Shawneen Finnegan	Susan Hartner	Eric Liskay
John Fitchen	Richard Hays	Ann Littlewood
Karen Fitzsimmons	Julie Heade	Alan Locklear
Lisa Fletcher	Gary Heckendorn	Glenn Luft
Gabriel Forcier	Kathryn Heckendorn	Rie Luft
Laurie Frajola	Ann Heffner	Julie Luse
Lynne Francis	Bill Helsley	Katherine Lux
Nancy Fraser	Sara Henderson	Barbara Macomber
Scott Fraundorf	Linda Hendrickson	Jerome Magill
Bunny Hirtzel	Irene Higgins	Amber Magnus
Mel Hoffman	Barb Hill	Becky Magnuson
Noah Homberg	Bunny Hirtzel	Linda Magnuson
Patsy Homberg	Mel Hoffman	Mark Magnuson
Lisa Hou	Alice Froehlich	Mercedes Maltese
Phil Hubert	Carol Fuller	Caroline Mann
Laila Hungerford	Cameron Gaddy	Jane Manson
Marlene Huntsinger	James Galbreath	Ashley Marchi-Young
Joey Hyland	Ryan Galford	Molly Marks
Julie Isaacson	Martha Gannett	Louise Martell
	Laurie Garretson	Patty Martin
	Suzanne Gearhart	Missy Martin

Important Bird Area of the Month

by Mary Coolidge, Assistant Conservation Director

Jackson Bottom Wetlands Preserve

When a Gyrfalcon was reported at **Jackson Bottom Wetlands Preserve** (JBWP) late last November, I made a sunny first-of-December trek to the site, much belated after more than 15 years of living in Portland. While the trip didn't fulfill the promise of the **Gyrfalcon**, what I found there far outpaced the original mission. Beyond the 12,000-square-foot Wetlands Education Center (which houses a 7x11-foot, 1,500-pound salvaged Bald Eagle nest!) lies a 725-acre complex of forested wetlands, oak groves, mixed woodlands, ponds, marshes, sloughs, and meadows sitting just north of and including a riparian swath of the Tualatin River in Hillsboro. Trails lead visitors past native demonstration gardens, through overlook blinds, and past ponds and mixed woods; the changing views and habitats keep entreatings deeper exploration.

A visitor to the site would never know the sometimes sordid history of place that has shaped JBWP over the years. Once used by native peoples as a rich hunting and gathering site, these bottomlands were later ditched and drained to serve agricultural needs, were trampled and overgrazed by cattle, and in time became the repository for cannery waste and construction debris, a practice that fouled both the land and the adjacent Tualatin River.

In Memoriam — a Lost Bird's Story The Heath Hen

by Todd Victor McGrain

When European settlers arrived on the east coast, they hunted the Heath Hen so extensively that servants bargained not to be fed Heath Hen more than two or three times a week. The Heath Hen's habitat stretched along the coast of New England from Maine to Virginia. But by 1870, due to overexploitation, the Heath Hen population on the mainland of the East Coast had vanished.



Stuffed specimen of the extinct Heath Hen.
Photo: C. Horwitz

Numbering in the hundreds, the survivors lived on Martha's Vineyard. Over the next quarter of a century, the state of Massachusetts attempted to save them: enacting a hunting ban, shooting predatory animals, planting crops to feed the hens, and establishing a reserve in 1908. But numbers continued to diminish. A disastrous fire and the unfortunate arrival of Goshawks, a serious Heath Hen predator, ravaged the remaining population.

Strutting through the brush, male Heath Hens boomed and pounded the earth to attract a mate. Each year, returning to their breeding grounds, they engaged in spectacular displays of bravado and strength, jumping and spinning in the air, thrusting their chests against one another, as they competed for the right to propagate their species.

Heath Hens usually flew only to the lower branches of trees. But in 1929 ornithologists witnessed a hopeful male fly to the top of a tree and call out, loudly and repeatedly, across the island. There were no Heath Hens to hear his plea. He was last seen on March 11, 1932.

The Heath Hen is "survived" by the Greater Sage Grouse, whose numbers have dropped from 16 million to a few hundred thousand in 11 western states. See the Heath Hen in the Lost Bird Project, a public art installation to be presented by Portland Audubon beginning June 26, 2010 at Waterfront Park. This beautiful sculpture group serves as a memorial to lost species as well as call to action — we must not lose more birds. To learn more about the project, visit audubonportland.org/support-us/fundraising-events/lost-bird-project/lost-bird.

By the 1970s, a 'Friends of Jackson Bottom' group came together to restore the historic wetland habitat, and by the late 1990s, the merging of conservation entities birthed the Jackson Bottom Wetlands Preserve Board as an official nonprofit. Their \$2.5-million capital campaign funded the construction of the Education Center, a gateway to the Preserve property that houses staff, hosts students and visitors, and provides a premier educational resource. Today the Preserve is managed by the City of Hillsboro Parks and Recreation District and provides exceptional recreational and educational opportunities to the public, including summer camps and a teacher education program, both aimed at increasing knowledge about wetlands and inspiring preservation of the natural environment. As a testimony to their work, JBWP's work received a National Wetlands Award for Education and Outreach from the Environmental Law Institute in 1999.

Like many natural areas in the metropolitan area, the Jackson Bottom Wetlands Preserve faces the challenge of non-native plant species invasions that reduce wildlife habitat value. In collaboration with Clean Water Services and other agencies, the crucial work of water quality improvement and habitat restoration is ongoing. Collaboration on restoration projects and monitoring efforts helps to ensure that the value of this area for birds and other wildlife persists into the future, even as our regional population continues to grow and urbanization increases. Natural-area anchors like this one help preserve the network of open space on which urban wildlife populations increasingly rely.

Ornithological Significance

Jackson Bottom Wetlands Preserve provides habitat for breeding, migrating, and overwintering birds; a checklist of birds sighted at the Preserve since 1990 lists over 130 species. It was nominated as an Important Bird Area for significance to **nesting Bald Eagles**, a **Great Blue Heron rookery**, and presence of significant numbers of



One of the ponds at Jackson Bottom Wetlands Preserve © Marilyn Stinnett

Dusky Canada Geese, Tundra Swan, Northern Pintail, Canvasback, Blue-winged Teal, Green-winged Teal, Bufflehead, and Ring-necked Duck. Black-crowned Night-Heron have also been documented here. Audubon Watch-Listed species that have been found here include **Short-eared Owl, Olive-sided Flycatcher, and Rufous Hummingbird**. Spring migrants include **Western Tanager, Black-throated Gray Warbler, Orange-crowned Warbler, Townsend's Warbler, Black-headed Grosbeak, and occasional Lazuli Bunting, Bullock's Oriole, and Red Crossbill**. Common species include **Marsh Wren, Cedar Waxwing, Yellow-rumped Warbler, Common Yellowthroat, Savannah Sparrow, Wood Duck, Cinnamon Teal, Common Merganser, and Great Blue Heron**. Additional occasional visitors: **Sandhill Crane** (spring, fall), **White-tailed Kite** (fall, winter), **Long-billed Dowitcher** (fall), and **Northern Shrike** (fall, winter).



Black-crowned Night-Heron © Jim Cruce

For more information or if you go:

Call 503-681-6206 or visit www.jacksonbottom.org/index.php for a wealth of information on events and educational activities at Jackson Bottom Wetlands Preserve, located at 2600 SW Hillsboro Highway. From Highway 26, take Exit 57 (Glencoe Road), head south, and pass through downtown Hillsboro. Glencoe Road becomes Highway 219, and the JBWP entrance is on the left (east side of road), 6 miles from Highway 26.

Estate Planning Seminar

If you are thinking of doing your estate planning, please join us on **April 22nd** for a brief seminar on wills, trusts, estate planning, estate taxes, and the tax aspects of charitable giving with attorneys Philip Jones and Holly Mitchell. Phil is a former member of the Audubon Society of Portland board; he and Holly practice estate planning with the Portland law firm of Duffy Kekel LLP. This free seminar will be held on Thursday, April 22 at 7:30 p.m. in Heron Hall, and will be followed by a question-and-answer period. **Please RSVP to Ann at 971-222-6117 or atakamoto@audubonportland.org**. We hope you can join us!

Members Receive a Discount at the Nature Store!

Audubon Society of Portland's Nature Store is the headquarters for naturalists in the Portland-Vancouver metro area. We feature nature books, hiking & field guides, birding software, CDs, DVDs, binoculars and spotting scopes, birdfeeders and seed, plus gifts & toys for adults & children, all with a nature theme. **Portland Audubon members receive a 10% discount off regular prices.**



Zeiss Victory 8x42

Looking for some great new optics for your **Birdathon** adventure or your spring bird song walks? This past year, the Nature Store has enjoyed being a new dealer for the **Victory FL** line of top-quality binoculars from **Carl Zeiss Optical**. We are pairing with Zeiss this spring to offer birders a special bonus to complement the



Manfrotto 701HDV

purchase of Zeiss Victory FL mid- or full-size models through the end of May: a **\$150 Gift Card for Nature Store purchases!**

And if you stop in the store to try out the Victory FL, you'll be able to compare them with both the newly redesigned **Swarovski EL** and the **Nikon EDG**, which features a newly upgraded focus mechanism. It is an unparalleled opportunity to "**Try the best before you select!**" Our prices are competitive with those on the Web, so what are you waiting for? Stop in today!

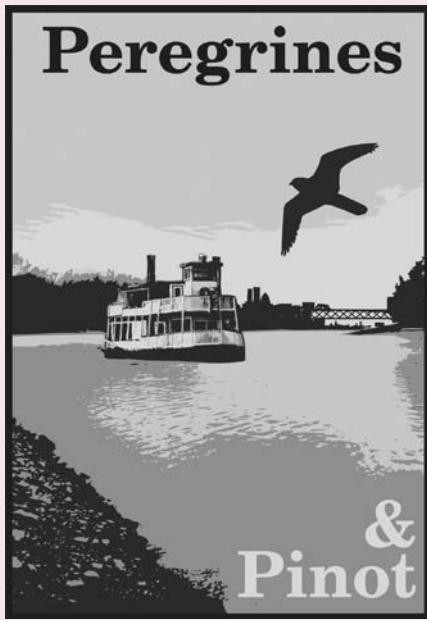
Attention digiscopers! We've just brought in a new tripod head from **Manfrotto**. The **701HDV** is a smooth microfluid head with a built-in sliding plate that allows you to rebalance your scope when adding the additional weight of a camera. It costs a bit more than our standard #3130 head, but saves the expense of purchasing a separate balance rail while also offering enhanced stability.

PORTLAND AUDUBON'S NATURE STORE

5151 NW Cornell Road • Portland, OR 97210
503-292-9453 • store@audubonportland.org

Open 10am–6pm Monday through Saturday
10am–5pm Sunday

SAVE THE DATE!
Saturday, June 5 • 5pm–7pm



2nd annual
Peregrines & Pinot
a Sternwheeler Rose benefit
for Portland Audubon's
Wildlife Care Center

Enjoy cocktail hour on the deck of the beautiful Sternwheeler *Rose* while cruising through spectacular wildlife areas on the Willamette River. See Peregrine Falcon nest sites, Bald Eagles, Great Blue Herons, and other wildlife as Audubon's Conservation Director, **Bob Sallinger**, entertains with commentary and insight into the natural beauty and wildlife of Portland from a river perspective.

Proceeds go directly to help the wild animals that get assistance from Audubon's Wildlife Care Center.

Cost of \$75/person includes hearty hors d'oeuvres, a glass of wine, and entertainment. No-host bar will be available on board.

Visit our website for more information and to register for this enjoyable evening cruise.

Wildlife Conservation
Lecture Series

Urban Coyotes

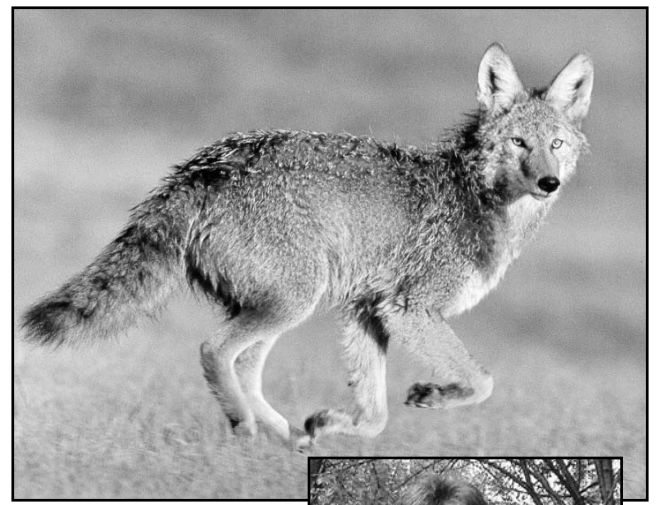
Stanley Gehrt, Ph.D., Assistant Professor and Extension Wildlife Specialist at Ohio State University

Tuesday, April 27, 7pm
Oregon Zoo's Banquet Center

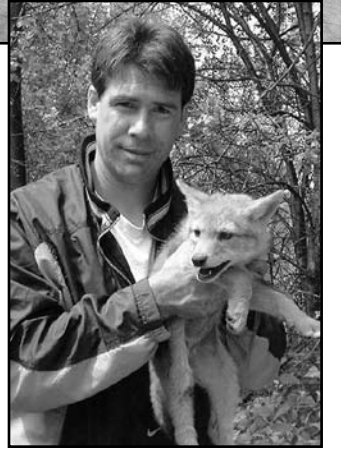
The howl of coyotes echoing across our urban landscape has become an increasingly common occurrence in recent years. In fact, coyotes can be found even in the most urbanized areas of our city. Come learn about the animal that Navajo sheep herders once called "God's Dog." Dr. Stanley Gehrt recently completed a study of urban coyotes in Chicago that has been described as "The most ambitious work of its kind in the country." Dr. Gehrt tracked 220 radio-collared coyotes in Chicago over the course of his six-year study. His work is fascinating and will provide valuable insights for wildlife lovers, wildlife professionals, and neighborhoods learning about urban coyotes.

Cost: \$8 for members of Audubon Society of Portland, Oregon Zoo, World Forestry Center, students, and seniors; \$10 for all others.

Go to www.oregonzoo.org/Education/adults/adults_lecture.htm for information on the lecture. For information on living with coyotes, see www.audubonportland.org/backyardwildlife/brochures/coyote.



Coyote
 © Jim Cruce



Stanley Gehrt with coyote pup
 © S. Gehrt



California Condor. Photo: Finley & Bohlman 1906, USFWS

Returning Condors
to Arizona

Chris Parish, Director of Condor Reintroduction Program, The Peregrine Fund

Tuesday, April 13, 7pm
Oregon Zoo's Banquet Center

Get the latest news from Arizona's Vermilion Cliffs National Monument, where the majestic Condor, once at the brink of extinction, is being returned to the wild.



Audubon Society of Portland

Inspiring people to love and protect nature since 1902
 Audubon Society of Portland promotes the enjoyment, understanding, and protection of native birds and other wildlife and their habitats. We focus on our local community and the Pacific Northwest.

ADMINISTRATION OFFICES

5151 NW Cornell Rd • Portland, OR 97210
 503-292-6855 • Fax: 503-292-1021
 9am to 5pm, Mon. - Fri.

SANCTUARIES

Dawn to dusk every day

NATURE STORE

503-292-9453
 10am to 6pm, Mon. - Sat. • 10am to 5pm on Sunday

INTERPRETIVE CENTER & LIBRARY

Same hours as store

WILDLIFE CARE CENTER

503-292-0304
 9am to 5pm every day

RARE BIRD ALERT

503-292-6855 • www.audubonportland.org

Board Officers

President.....Peter Paquet
 Vice President.....Pat Campbell
 Secretary.....Wink Gross
 Treasurer.....Ken Ivey

Board Members

Josh Cerra	Kristina Gifford	Claire Puchy
Nancy Jane Cushing	John Hammerstad	Lee Savinar
Tony DeFalco	Barb Hill	Ron Spencer
Katy Ehrlich	Bob Liddell	
John Fitchen	Karen O'Connor Kruse	

Board Member Emeritus - Dave Marshall

Committee Chairs

Conservation.....Lynn Herring
 Education.....Vacant
 Executive.....Peter Paquet
 Finance.....Ken Ivey
 Membership & Development.....Katy Ehrlich
 Sanctuaries.....Ann Littlewood
 Board Affairs.....Josh Cerra

Staff

Executive Director.....Meryl Redisch
 Office Manager.....Tammi Miller
 Development Director.....Ann Takamoto
 Bookkeeper.....Jill Hartzell
 Birdathon Coordinator.....Gary Slone
 Membership Development Coordinator.....Catherine Halpin
 Membership Assistant.....Pam Meyers
 Education Director.....Steve Robertson
 Adult Education Coordinator.....Steve Engel
 Camp Director/Onsite Programs Specialist.....Sarah Swanson
 Master Birder/Adult Trip Coordinator.....Dan van den Broek
 Environmental Educator.....Ian Abraham
 Environmental Educator.....Tim Donner
 Urban Naturalist.....Mike Houck
 Conservation Director.....Bob Sallinger
 Assistant Conservation Director.....Mary Coolidge
 Conservation Program Staff.....Ariana Longanecker
 Urban Wildlife Specialist.....Karen Munday
 Ten Mile Sanctuary Manager.....Paul Engelmeyer
 Volunteer Coordinator.....Deanna Sawtelle
 Wildlife Care Center Operations Manager.....Deb Sheaffer
 Wildlife Care Center Assistant Manager.....Kari Jones
 Nature Store Manager.....Nancy Mattson
 Nature Store Assistant.....Marilyn O'Grady
 Nature Store Clerk.....Sally Loomis
 Sanctuaries Director.....Tom Costello
 Sanctuaries Assistant.....Greg Kurtz
 Backyard Habitat Certification Technician.....Rick Mishaga

BUSINESS MEMBERS

Through their business practices and financial contributions, the following business members help Audubon Society of Portland fulfill its mission. If you would like to become a business member, please contact our Development Department at 971-222-6117.

Business Benefactor

NW Natural

Business Guarantors

Backyard Bird Shop
 Portland General Electric

Business Partners

BridgePort Brewing Company
 Columbia Sportswear
 Forest Park Federal
 Credit Union

Business Friends

Barran Liebman LLP
 Bob's Red Mill
 Carton Service, Inc.
 Duggan, Schlotfeldt & Welch PLLC
 Kennedy/Jenks Consultants, Inc.
 ShoreBank Pacific
 Tactics Board Shop
 Vernier Software & Technology

Business Supporters

Enterprise Rent-A-Car
 Leupold & Stevens, Inc.
 NatureBake & Dave's Killer Bread
 Portland Audubon Nature Store



NW Natural
www.nwnatural.com



www.BridgePortBrew.com



A world-class car rental company with homegrown roots.
www.enterprise.com

