

Warbler

Winter Break Camps!
See page 5



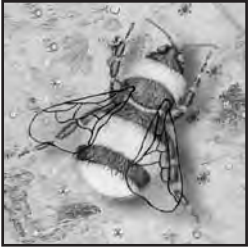
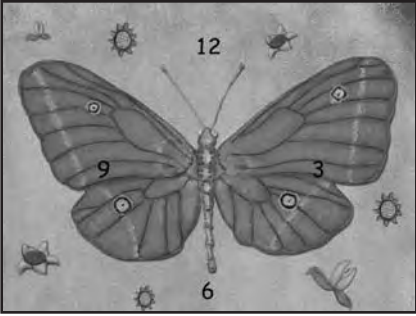
Black-throated
Gray Warbler

In this issue...

**Christmas
Bird Count**
See page 4

**West Hayden
Island Update**
See page 3

**Dec. 1 & 2
Holiday Open House**
See page 2



3 nightlights:
Paperwings Studio

Your Holiday Gifts are For The Birds... Literally!

by Nancy Mattson, Store Manager, and Deborah Hyde, Store Volunteer

There are many great ways to support Portland Audubon, but holiday shopping at the **Nature Store** can be the most fun! You'll find a terrific selection of **holiday cards, gift-wrap, 2013 calendars, and creative nature-related gifts** for your family, friends, teachers, and anyone else on your shopping list. When you're done shopping you can enjoy the trails in the Nature Sanctuary, and you might even see your favorite Education Bird!

Every dollar you spend at the Nature Store goes directly to the Audubon Society of Portland to support the Nature Sanctuary, Wildlife Care Center, Education Programs, and our Conservation Initiatives in the metropolitan region and throughout Oregon.

Buy Local at Audubon

Did you know that **local companies, craftspeople, and artisans** are preferred vendors for Portland Audubon Nature Store products? Sprinkled throughout the gift ideas that follow, you'll see a *sampling of regional businesses you'll also be supporting with your shopping dollars at the Nature Store.*

Specially Made for the Holidays

This year **Sara Quigley** of Lake Oswego is hand-crafting endearing little **quilted owl ornaments**. You can hang some on a tree or stand them up on their own tiny feet. You can even decorate your gift-giving by tying them to your packages with ribbon! Come and meet Sara in person at the **Nature Store's Holiday Open House** (see page 2 for details).

Also from Lake Oswego, artist **Fran Tewksbury** is creating **hand-painted porcelain hanging wildlife ornaments**. And our friends in Wisconsin, **Timber Green Woods**, are crafting **natural-wood bird ornaments**. You'll recognize your favorite species, crafted from sustainably harvested trees. Timber Green also has **beaded wineglass charms**



decorated with birds, bugs, and fall leaves — a little special something to help us keep track of our stemware at festive gatherings!



Handcrafted & Local

We love **wildlife & nature earrings** and carry a great selection from **Joseph Brinton Studios** of SE Portland. Hand-forging the earrings in brass, copper, nickel, and steel, Joseph finishes them using a variety of techniques including hammering, bead blasting, and texturing.

For natural stone lovers, see what **Wendy Vernon** of **Oregon Stone Earrings** from Sisters has to offer. Wendy makes her lovely earrings using sterling silver wires and decorative silver beadwork, with beautifully polished minerals like Oregon agate, Oregon opal, sunstone, rhodonite, and Oregon jasper.

Shari Peressini of **Peppermint Charms** in Vancouver creates colorful leaded glass and beaded necklace designs, and **Dee Indgjerd** of **In Small Packages** out of Spokane repurposes Mahjong Tiles and Scrabble pieces for pendants by using the backside to display her nature images. And circling back to Portland, **Lori Judge** molds glass into both birdy pendant necklaces and hanging ornaments, all in bright primary colors.

Tonya Gray of **Oh My Stars!** hand throws **pottery spoon-rests and soap dishes** in her Sellwood studio, which would go nicely with **handmade soap** made in Portland by **Jenteal**. The Nature Store carries the soaps in great scents like Oregon marionberry, cinnamon cider, and pumpkin spice.

Another gift for the home on these dark winter days is a nightlight made by **Bruce Allison** of **Paperwings Studio** in Vancouver. His unique, whimsical designs are also featured on matching switchplates.

Northwest Bounty to Share

Sauvie Island Coffee, a regional roaster located on Portland's premier wildlife island, offers flavorful selections in organic dark and medium roasts and a medium-bodied decaf. Great choices for holiday entertaining or as gifts when visiting friends, all beans are **shade-grown** to protect the habitat of our migrating warblers who winter in



© Veronica Rose

Central and South America's coffee-growing regions. And enjoy your coffee with a holiday treat! This year we have a selection of tumbled chocolates from local cocoa artisans **Moonstruck Chocolate Company**. Choose from **Milk Chocolate Tumbled Sea Salt Caramel, Caramelized Hazelnuts, or Dark Chocolate Tumbled Blueberries**. Moonstruck's eye-catching gift boxes are embellished with a bird silhouette on a swirling wintery snow scene.

continued on page 8

Holiday Store Hours

Monday–Saturday	10–6
Sunday	10–5
December 24th	10–3
Christmas Day	Closed
December 31st	10–3
New Year's Day	Closed

Snowed in? Many of the items listed here and in our online store can be ordered without leaving home, shipped straight from the Nature Store. See **audubonportland.org** or call 503-292-9453.

Inside this issue

Page 2	From the Director
.....	Audubon Outings
Page 3	Conservation
Page 4	Christmas Bird Count
.....	Wildlife Care Center
Page 5	Trips & Tours & Classes
.....	Winter Break Camps
Page 6	Nature Store Highlights
.....	New Members
Page 7	More GREEN Gift Ideas
Page 8	Map/Hours/Sponsors
.....	Calendar at a Glance

View this Warbler and past issues at
www.audubonportland.org/about/newsletter.

More Great GREEN Gift Ideas — See page 7



**Audubon Society
of Portland**
5151 NW Cornell Road
Portland, Oregon 97210

From the Executive Director



Meryl Redisch

From Argentina to Oregon, and a Perspective for the New Year

I recently returned from co-leading a birding tour to Argentina with Portland Audubon staff member Dan van den Broek and 15 world travelers. While our excursion began in the bustling city of Buenos Aires, home to 12 million people, we spent most of the time exploring Patagonia — an enormous and considerably less populated region in Argentina that is beautiful, wild, and rich in habitat and bird diversity. Over the course of 13 days, including 3 spent in and around Buenos Aires, our group counted just over 200 species of birds. Even though I had done some bird watching with local guides on my personal travels abroad, I was easily swept up in the excitement of seeing so many new and brilliantly colored birds on a daily basis.

As the days wore on and the rhythm of traveling normalized for me, I began to think about the kinds of conservation challenges facing Argentina. For example, sheep and other livestock grazed practically everywhere along the steppe plateaus of Patagonia. Martina, our guide from Calafate, let us know about the problems associated with overgrazing and shared that a land trust program is just starting to help ranchers protect and restore these fragile habitats.

And from Diego, our guide in Buenos Aires, who has been birding for 40 years, I learned that that there is virtually no government funding for conservation. Support comes from relatively few individuals and international organizations like the World Wildlife Fund. He provided our group with

the story behind the establishment of the Constanera del Sur, a natural area adjacent to one of Buenos Aires’ densest neighborhoods. This 850-acre greenspace was the result of a landfill project started in the late 1970s and abandoned by the government less than a decade later. Now this popular natural area of trails and views of the Rio de la Plata is home to dozens of incredible birds such as the Red-crested Cardinal and Glittering-throated Emerald Hummingbird and is also designated as one of Birdlife International’s Important Bird Areas. However, it also needs serious restoration work performed in order to remove the invasive plants and sediment that is filling in what remains of open water and wetlands.

In addition to seeing and learning about many new birds that both reside and migrate to the southern hemisphere, I am once again reminded of what we have right here . Sure, Oregon has its own conservation challenges and many are similar to what Argentina is grappling with today. But what’s different is this: Oregon and the Portland metropolitan region are a community rich in people who care and make choices every day to ensure that those birds, wildlife, and the habitats they depend upon flourish. We are a community that creates better backyards for birds, stands up for people and wildlife by speaking out against unnecessary development, and volunteers to physically change the landscape for the better. As this year comes to a close, I am very thankful and sincerely appreciative of all that you do to help keep us strong. Best wishes for a healthy and peaceful holiday and New Year.



©Veronica Rose

Holiday Open House at Audubon Nature Store

Saturday, Dec. 1, 10am–6pm
Sunday, Dec. 2, 10am–5pm

Join us for our free annual Holiday Open House as we kick off the Holiday Season. A warm, welcoming fire in our cozy Audubon House hearth will beckon winter revelers. Delicious treats and warm beverages will chase away the winter chill. Enjoy live music or participate in a family craft activity. Take a short hike in the Nature Sanctuary and visit with the Education Birds!

All Weekend Enjoy:

Sauvie Island Coffee, Spiced Tea & Hot Cocoa, plus holiday food treats.

Saturday Events:

- **Meet children’s authors** Terry Irish & Bobbie Snead as they autograph copies of their books, *A Pika’s Place* and *Owl Grove* (set in Clackamas) and Terry’s new book, *Tree Secrets*.
- **Have your face painted** by Audubon volunteer Julie Corbett of The Gilded Cat.
- **Participate in a family craft activity** guided by our Audubon Volunteer Staff.



Sunday Events: Music Day!

- **12:30pm–6pm: Meet fiber artist** Sara Quigley and watch her craft delightful little owl holiday ornaments (see photo on page 1)!
- **10am–Noon: Listen to contemporary keyboard music** with composer/performer Therese Michaud.
- **Noon–4pm: Enjoy a Live Bluegrass Music Jam!** Join us for this free, fun, casual, monthly jam session. Bring an instrument and join in — or just watch, listen, and tap your toes to the musicians of the Oregon Bluegrass Association.
- **Participate in a family craft activity** guided by our Audubon Volunteer Staff.

Audubon Outings

Bring binoculars and dress for the weather — beginners welcome!

December 8 (Sat), 9am–11am Westmoreland Park

Join leaders **Max Smith** and **Sarah Swanson** for a morning walk through southeast Portland’s Westmoreland Park. Max and Sarah will share tips for identifying the waterfowl, gulls, and songbirds that gather at this park each winter. Meet at the park’s NW corner near the corner of SE 22nd & Bybee Blvd.

December 15 (Sat), 8am–11am Ridgefield NWR, Oaks to Wetland Trail

Join us on this walk as we look for winter sparrows and waterfowl. The trail can be muddy so bring appropriate hiking shoes. Meet at the trailhead parking lot on the Carty Unit, located one mile north of the intersection of Pioneer & Main Sts in downtown Ridgefield, WA. Call **Ron Escano** at 503-771-3454 if you need more information.

Special Thanks to our Major Wild Arts Festival Sponsors

Thank you for making the 2012 Wild Arts Festival a great success!

Presenting Sponsor

AUDUBON SOCIETY OF PORTLAND

WILD ARTS FESTIVAL

Presented by Backyard Bird Shop

NATURE NIGHTS

Second Tuesday of the month from September to May. If you have a suggestion for a Nature Night presentation, contact Pam Meyers at pmeyers@audubonportland.org or 503-292-6855 ext. 130.

FREE and open to the public!

Photographing the Secret Worlds of Nature with Michael Durham

Tuesday, December 11 7pm, Heron Hall

What is the exact wingbeat sequence and leg position of a bee or a dragonfly in flight? What does a coho salmon look like just before it emerges from the egg? How do frogs land a spectacular jump? How do bats use their wings to maneuver? Which creatures drink at a waterhole at night? It’s hard to find the answers to these natural events that take place at lightning speed or in the dark or in hidden spaces. But it is so cool to know!

Internationally published photographer **Michael Durham** has uncovered the answers by using the camera to see beyond what the human eye can perceive. Using unconventional techniques and custom equipment, Michael explores the secretive and hidden side of nature. He states that “So much of the complex web of life that connects everything in an ecosystem together is just out of sight, but a camera can be used to reveal what the human eye misses.” Join us for Nature Night on December 11th as Michael shares his knowledge and extraordinary photographs.

Born in 1964 in Oregon, Michael started his photo career in commercial photography and eventually migrated into natural history photography and journalism. He has also worked with the Oregon Zoo for 22 years and currently produces much of their digital media. His work has appeared in books, magazines, and digital media throughout Europe, Asia, and North America, including *Nature’s Best*, *Audubon*, *National Wildlife*, *Sierra*, *Defenders*, *Nature Conservancy Magazine*, *BBC Wildlife*, *Orion*, *National Geographic for Kids*, and many more.

You don’t have to be an expert photographer to enjoy this evening!

January’s Nature Night

On **January 8, 2013**, Gary Ivey will present “**Oregon’s Glorious Trumpeter Swans**.” Gary is president of the Trumpeter Swan Society, and will cover the history and current status of these majestic birds in Oregon as well as share tips for identifying them in the field and where to find them during winter and summer.

Common Nighthawk © Michael Durham

City of Portland Set to Steamroll Critical Wildlife Habitat, Vulnerable Communities, and the Public Process

by Bob Sallinger, Conservation Director

"If the salmon are not here, the circle becomes broken and we all suffer."

—Joel Moffet, Tribal Executive Committee, Nez Perce Tribe, testifying on November 15, 2012 against West Hayden Island development

In the end it comes down to this: Is the leadership of Portland willing to steamroll the public process in order to allow the Port of Portland to develop West Hayden Island? For 15 years the Port has tried to annex and rezone West Hayden Island for industrial development and for 15 years the public has said a resounding "No." The costs to our communities and our environment are simply too high.

On November 15th, the Portland Planning and Sustainability Commission held its first public hearing on West Hayden Island Annexation. It was met with an overwhelming show of opposition. More than 200 people packed the hearing room to capacity and filled an overflow auditorium to standing room only. The hearing got off to a powerful start with testimony from the Yakama, Nez Perce, and Grande Ronde Tribes and continued with powerful opposition testimony by people from across the region and all walks of life. The hearing was extended to 10 p.m. (4.5 hours), and a continuation of the hearing was added on November 27th to accommodate additional people who desired to speak.

The opposition to this development is simply massive. Residents of Hayden Island who will face a tripling of air toxic levels to 55 times above the state benchmarks rented a bus to attend the hearing. The North Portland Neighborhood Chair Network, representing 9 neighborhoods and more than 45,000 residents, announced their unanimous opposition on November 5th. The Confederated Tribes and Bands of the Yakama Nation, Confederated Tribes of the Umatilla Reservation, the Nez Perce Tribe, and the Confederated Tribes of the Warm Springs Reservation have all announced their opposition, citing the Treaty of 1855 as well as a July 12, 2012 Portland City Council Resolution promising to honor and respect tribal treaty rights and Native American spiritual beliefs.

There was outrage not only about the impacts that this project will generate but also at the way this process is being handled. In June, the City and Port went behind closed doors, cut a deal that completely ignored legitimate public concerns, and tried to take the proposal forward for adoption. That effort was turned back by an outpouring of public opposition, but it appears that little has changed in the ensuing 5 months. The public hearings that started on November 15th began before the WHI citizen advisory committee completed its work, were based on annexation



Tribal leaders from the Nez Perce Tribe and Yakama Nation testifying against West Hayden Island development at the November 15th hearing. © Bob Sallinger

proposals that were 4 months out of date, and failed to include any of the new data that was developed in recent months including a health analysis produced by Multnomah County that shows very significant health impacts on the local community. The timeline was purely political — a willingness to sacrifice public welfare in exchange for the political narcissism of getting this done before the new council takes office on January 1st.

To the Planning and Sustainability Commission's credit, several members recognized at the November 15th hearing that the timeline is not reasonable, that major issues remain unresolved, and that there is a need to slow down and give this decision the public process and careful consideration it deserves. Sadly, it is not clear that the wisdom of the Planning Commission will prevail; by the next morning it appeared clear that forces within City Hall were doubling down on their intention to force a decision in the few weeks that remain before the end of the year.

West Hayden Island is an irreplaceable resource, home to bald eagles, salmon, and hundreds of other wildlife species. It is without question one of the most valuable natural resource sites in the region and one of a dwindling number of intact, anchor sites critical to efforts to restore the ecological health of both the Willamette and Columbia Rivers. Its loss would be a tragedy for our community and our environment. However, more is at stake here than just West Hayden Island.

In April the City adopted the Portland Plan, a long-range vision for Portland that prioritizes equity as the City's guiding principle. It is the central accomplishment of the Adams administration, but it is a paper accomplishment only. The Decision on West Hayden Island represents the City's first real test of its commitment to implementing the



This Bald Eagle nests in the middle of the area that the Port would convert to parking lots. © Bob Sallinger



Some of the 1400-plus residents of the West Hayden Island manufactured home community protest development that will triple their air toxics levels to 55 times state benchmarks. © Bob Sallinger

Portland Plan vision on the ground. Right now it is on the verge of failing that test.

We do not believe that it is acceptable that a City government committed to equity and a public project that is predicated on generating hundreds of millions of dollars in wealth, needs to leave our most vulnerable communities and our most ecologically damaged river environments even more degraded than they are today.

The City talks about the "triple bottom line" of supporting our economy, our environment, and our communities. However, in reality, it continues to rely on an old paradigm which accepts that environmental and community degradation are the costs of doing business. The fact is that the City and Port have never put an annexation proposal on the table that comes close to mitigating for the tremendous impact that this project will have on the environment and the community. If the Port and City cannot bring forward a proposal that leaves our communities and environment better than they are today, then the correct answer is not to steamroll the public process, it is to vote "No."

Oregon Supreme Court Rejects Industry Efforts to Gut Environmental Protections for Willamette River

By Bob Sallinger

On November 8, 2012 the Oregon Supreme Court scored a major victory for the health of our river and our riverfront communities. The Court unanimously rejected an argument, made by Willamette River industrial landowner Gunderson Marine, that state law prohibits local governments from regulating industrial lands within the Willamette River Greenway. The lawsuit was a shameless attempt to intimidate the City, roll back environmental protections that have been in place for decades, and prevent new environmental regulations to be put into place. If successful, the lawsuit would have eliminated the City's ability to protect its most valuable natural resource, the Willamette River.

In delivering this ruling, the Court affirmed the legality of the City's North Reach River Plan. Adopted by City Council in 2010, the Plan sought to update 25-year-old environmental regulations. Audubon worked on this plan for the better part of a decade and hundreds of our members wrote letters and came out to hearings to support its adoption. It is a critical part of setting our degraded

river on a path toward ecological health. The Court wrote, "the City was free to require that all development within the North Reach be subject to the River Review process."

The River Plan has been in limbo since 2010 due to this litigation. Unfortunately it is likely to remain in limbo for at least another year. A lower court ruling that remains in place found that the City relied upon an out-of-date economic analysis when it adopted the River Plan and that the analysis must be updated before the River Plan is implemented. Ironically, the economic analysis would not have been out of date had the City completed the River Plan on schedule, but its adoption was delayed for almost two years while the City tried to accommodate concerns raised by river industries.

We look to the new City Council to finish the economic analysis and move the River Plan forward as soon as possible. The ruling by the Supreme Court on November 8, however, eviscerates industries' central and most insidious claim, one which would have fundamentally undermined

the City's central role in ensuring that our river and river communities are protected and the local citizens have a voice in how our river is managed.

Although Gunderson Marine is the organization that took this case all the way to the Oregon Supreme Court, it is important to note that the original cases were brought by a wide array of Portland Harbor industrial landowners and the Working Waterfront Coalition. In the coming months, as the Portland Harbor Superfund Process kicks into high gear, our community will be flooded with a deluge of industry propaganda extolling their green values. It would be wise to remember this case and how river industry tried to eliminate Portland's ability to protect our river and our riverfront communities.



To Our Wildlife Care Center Volunteers: Thank You!

by Deb Shaeffer, WCC Veterinarian

We ask our Wildlife Care Center volunteers for a lot, and they give us even more. In the past year, over 120 active volunteers have contributed more than 20,000 hours to the Wildlife Care Center and Education Bird programs. That translates to 10 full-time staff! Compare that number to the Care Center's 2.5 staff and you get a clear picture of how critical to our efforts our volunteers are.

Brooke Abbruzzese	Angela Cox	Monica Gordon
Marilyn Abend	Tamara Curry	Shannon Grondin
Matt Baird	Susan Dale	Carol Gross
Annie Barklis	Barbara deManincur	Gary Gross
Stephanie Bartlett	Dre Dengo	Margaret Hancock
Margaret Bell	Michelle Devlaeminck	Kathe Hart
Jay Bennett	Martin Dick	Ashley Harvey
Lani Bennett	Steve Dickinson	Bill Helsley
Robyn Bluemmel	Steph Doorly	Phil Hubert
Molly Bluhm	John Edwards	Julie Isaacson
Michelle Bolin	Katy Ehrlich	Dawn Jansen
Amber Breeding	Kent Ellsworth	Gerry-Anna Jones
April Brown	Jennifer Famulare	Kari Jones
Jeff Buckingham	Kelly Flaminio	Joyce Kaplan
Claire Carter	Nancy Fraser	Briana King
Tanya Cecka	Luc Frauens	Kay Koestler
Joe Chapman	Carol Frischmann	Lei Kotynski
Sharon Chesney	Carol Fuller	Christie Kraushaar
Hannah Cohen	Kristina Gifford	Mariha Kuechmann
Julie Corbett	Jan Gilbertson	Dana Kuiper
Yumiko Cornthwaite	Carol Goldberg	Sonja Lapinsky

Whether it's cage cleaning, educating the public about urban wildlife conflict resolution, bird handling, or the multitude of other volunteer duties, we value your time, talents, and dedication.

Thank you to all of our Wildlife Care Center volunteers. We couldn't do it without you!

Katri Laukkanen	Candy Plant	Jesse Serna
Angie Lehnert	Susan Pomeroy	Wendy Shoemaker
Tara Lilley	Maggie Lee Post	Bonnie Shoffner
Bruce Lind	Tom Potts	Mandy Sims
Rie Luft	Sharon Ralston	Kiersten Sorensen
Jenna Lundmark	Kirsten Reeves	Jackie Sparks
Becky Magnuson	Shelley Reynolds	Ann Spencer
Joe Martinez	Josie Reznik	Dorothy Springer
Micah Meskel	Leah Rivendall	Dorion Stanger
Pam Meyers	Jake Robertson	Trudi Stone
Rick Meyers	Christine Ross	Bennet Strauss
Arati Michaud	Ginnie Ross	Kathleen Studdert
Janet Miller	Kyna Rubin	Kendra Sundt
Tammi Miller	Scott Salzwedel	Lynn Sweeney
Michelle Mintmier	Sherie Salzwedel	Sandy Tamiesie
Paula Mishaga	Teresa Schechtel	Rochelle Teeny
Carol Mitchell	Sydney Schick	Bob Thompson
Charlie Monroe	Bob Schmitt	Liz Thompson
Kent Musselwhite	Jean Schoonover	Cecile Valastro
Pam Nielsen	Marilyn Scott	Erica Vollmer
Jennifer Parks	Marisa Scott	Jennifer Wynkoop



Volunteers Ginnie Ross and Claire Carter give antibiotic injection to sick Western Painted Turtle. Photo: Deanna Sawtelle



Volunteer Dolores Weisbaum with an Education Bird, Finnegan the Peregrine Falcon. Photo: Deanna Sawtelle

Thank you also to local veterinarians and veterinary clinics who share their expertise and time to help the wildlife in the Wildlife Care Center.

Kelly Flaminio, DVM	Cornell Center Animal Hospital
Mitch Finnegan, DVM	Laurelwood Animal Hospital
Bethany Groves, DVM	Dove Lewis Emergency Animal Hospital
David Barno, DVM and VCA	
Rock Creek Veterinary Clinic	
Susan Kirschner, DVM, DACVO,	
the Animal Eye Doctor	

What Has 400 Legs, 600 Eyes...

...and will be on the loose in Portland on **Saturday, Jan 5, 2013** looking for birds? If you answered "The **Portland Christmas Bird Count**," you're right! The Portland count has grown to formidable proportions in the last few years. It's now the largest Christmas Count on the West Coast and the third largest of all. Last year 208 field observers and 112 feeder watchers found 127 species, a record for the Portland Count.

Begun in 1900 as an alternative to the traditional wanton slaughter of anything that flew during Christmas Day "side hunts," **hundreds of Christmas Bird Counts are now conducted throughout the Western Hemisphere**, and they continue to contribute valuable scientific data to the longest existing record of bird population trends. Naturally, everyone likes the idea of contributing to science, but the real reason the counts have exploded in popularity? They're so much fun!

All over the Americas, birders will be participating in **one-day counts between Dec 14, 2012 and Jan 5, 2013**. The Audubon Society of Portland conducted its first Christmas count in 1926. This winter, our 87th **Portland count will be held on Saturday, Jan 5**. Please join us!

The Christmas Bird Count is a great way for birders of all levels to enjoy a day in the field and sharpen their birding skills. You'll also have the opportunity to meet others who share your interest in birds and to discover some good local spots to find birds. And you will contribute to scientific knowledge! In fact, the Christmas Bird Count is one of the best ways for the amateur birder to advance ornithology: **The data are sent to the Laboratory of Ornithology at Cornell University, where over the years Christmas Bird Count records have been used to study changes in bird populations and wintering ranges.** A quite amazing bibliography of Christmas Bird Count research and the entire historical record of all Christmas Bird Counts may be found at **birds.audubon.org/data-research**.

Each Christmas Bird Count attempts to count all the birds in a 15-mile-diameter circle on one given day. In addition to the Portland Count, roughly 50 other counts will be conducted in Oregon and SW Washington this year during the 3 weeks surrounding the holidays. Some of the counts in NW Oregon are listed below. A complete list of Oregon Counts can be found at **audubonportland.org/about/events/cbc2012** — check often since it'll be updated frequently.

Want to participate in the Portland Christmas Bird Count? Look at the map of the Portland CBC circle and pick an area you would like to help cover. (It need not be where you reside.) **Contact the area leader, who will tell you where and what time to meet on January 5.** The area leaders will put together teams to balance birding skills and cover as much of their area as possible. Most teams go out for the whole day, 7am–5pm, but you can usually make arrangements if you need to stop earlier. Can't decide which area? Contact Wink Gross at winkg@hevanet.com or 503-226-3842.

Can't do the Portland Count on Jan 5? Check out the other Counts around the state (see box). Pick one that suits your schedule, and contact the compiler directly.

For the most up-to-date Christmas Bird Count info, see audubonportland.org/about/events/cbc2012.

Area Leaders for Portland Count (Saturday, Jan 5, 2013)

Area 5: Northwest Hills/ Forest Park
Steve Engel (after Dec 22)
971-222-6119
or 503-640-1123
sengel@audubonportland.org

Area 4: Beaverton
Lori Hennings
503-797-1940
or 503-329-5003
lori.hennings@oregonmetro.gov

Area 3: Lake Oswego
Lynn Herring
503-635-8030
lynnhe@comcast.net

Area 1: Columbia Riparian
Tony DeFalco
503-224-2064
waxwing7@gmail.com

Area 2: Southeast Portland
Dan Strong
503-742-9093
jodanstrong@comcast.net

Major Counts in NW Oregon & SW Washington

For more listings, see www.audubonportland.org/about/events/cbc2012

<p>Dec 15 (Sat): Salem CBC Tim Johnson 503-363-8435 tim.the.fisherman@gmail.com Contact the compiler; teams arranged in advance.</p>	<p>Dec 17 (Mon): Upper Nestucca CBC Don Albright 503-538-8890 donalbri@teleport.com Contact the compiler.</p>	<p>Dec 30 (Sun): Hood River CBC Catherine Flick 503-407-7342 stewart@gorge.net Meet 6:30am, Best Western in Hood River (Exit 64 off I-84).</p>
<p>Dec 15 (Sat): Tillamook Bay CBC Owen Schmidt 503-282-9403 oschmidt@att.net Meet 6:30am, Denny's Restaurant, 2230 Main Ave N (Hwy 101), Tillamook.</p>	<p>Dec 22 (Sat): Forest Grove CBC Mary Anne Sohlstrom 503-463-9540 masohlstrom@msn.com or Greg Gillson greg@thebirdguide.com Contact the compilers.</p>	<p>Jan 5 (Sat): Portland CBC Wink Gross 503-226-3842 winkg@hevanet.com Contact one of the area leaders or the compiler.</p>
<p>Dec 16 (Sun): Columbia Estuary CBC Mike Patterson 503-325-1365 celata@pacifier.com Meet 7:00am, Pig-n-Pancake, 146 W. Bond, Astoria.</p>	<p>Dec 29 (Sat): Sauvie Island CBC Oregon side: Karen Bachman 503-289-3605 or 503-802-2057 karen.bachman@tonkon.com Washington side: Tammy Bjorkman 360-213-6489 bjorkmante@iinet.com Contact the compilers.</p>	

What to bring: binoculars, of course! Be prepared for a day outdoors in Oregon in the winter. That means warm clothes, rainwear, and waterproof shoes. The counts are generally held as scheduled, rain or shine. **Bring a bag lunch and snacks.** Last but not least, bring an **enthusiastic attitude and a willingness to search quietly and patiently for birds.** And this year you do **not** need to cough up a \$5 participation fee, as National Audubon has decided to waive the fee.

Almost every Christmas count turns up an unusual bird. Last year's Portland count had several, including **Hermit Warbler**, **Black Phoebe**, and **Snow Bunting**. Often, the "best bird" of the day is first spotted by a beginner. Perhaps you will be the person who finds the bird that makes everyone say, "Wow! We never expected that!"

Feeder Watchers Needed, Too!

A day tramping around in the cold and wet doesn't appeal to you? You may still be able to participate. **The Portland Christmas Bird Count welcomes reports from "Feeder Watchers."** Feeder Watcher observations are very important for certain species such as Anna's Hummingbirds and goldfinches. If you happen to live within the Count Circle (see Google map at tinyurl.com/26pmmppf) and maintain a birdfeeder, we'll want to know what you saw on Count Day. You need to count birds for only an hour to make a significant contribution. Remember, **only birds seen on Jan 5 "count."** Download the Portland CBC Feeder Watcher Checklist at **audubonportland.org/about/events/christmas_bird_count/feeder2012.pdf**, or contact Wink Gross at 503-226-3842.

Educational Trips

See full descriptions on website.

Colombia

January 4–18, 2013

Fee: \$4395 members / \$4695 non-members
Deposit: \$2000 required to secure your place
Leaders: Dan van den Broek and local guides
Contact **971-222-6105** or
dvandenbroek@audubonportland.org.

BIRDING COSTA RICA

April 13–26, 2013

Fee: \$3595 members / \$3895 non-members
Deposit: \$1800 required to secure your place
Leader: Dan van den Broek
Contact **971-222-6105** or
dvandenbroek@audubonportland.org.

Arizona

May 11–18, 2013

Tentative Fee: \$1995 members /
\$2295 non-members
Deposit: \$1000 required to secure your place
Leader: Dan van den Broek
Contact **971-222-6105** or
dvandenbroek@audubonportland.org.

ADVENTURE ALASKA

June 3–13, 2013

Fee: \$3395 members / \$3695 non-members
Deposit: \$1500 required to secure your place
Leader: Steve Engel
Contact **971-222-6119** or
sengel@audubonportland.org.

Malheur Foray

June 5–9, 2013

Fee: \$695 members / \$895 non-members
Deposit: \$300 required to secure your place
Leaders: Candace Larson and Patty Newland
Contact Steve at **971-222-6119** or
sengel@audubonportland.org.

AUSTRALIA

Tentative Dates:
Nov. 5–19, 2013

With extension to Tasmania

Fee: To be announced
Leader: Steve Robertson
Contact **971-222-6118** or
srobertson@audubonportland.org.

Adult Classes

See full descriptions and register on website.

The Well-Equipped Birder: Tips on Tools for Birding

Dec. 5 (Wed), 7pm–9pm in Heron Hall

With **John Rakestraw**, long-time birder, instructor, and author.
Free to all! Call **503-292-9453** to register.

Winter Gulls

Jan. 19 (Sat): 10am–Noon class; Noon–3pm local field trip

Class & Field Trip Fee: \$25 members / \$40 non-members

Class Only Fee: \$10 members / \$15 non-members

Nature Journaling the Seasons: The Bare Bones of Winter

Feb. 2 & 9 (Sat), 10am–4pm

Fee: \$75 members / \$95 non-members (plus materials)

Class size: Limited to 16 participants

See our website for details and supply list.

Wilderness Immersion Course

This course is about learning how to feel at home in the wilderness wherever you are. Fall quarter focused on enhancing baseline skills and awareness. Spring quarter will focus on skills to live by in nature and will cover wilderness navigation, shelter, cordage, food foraging, fire making, animal tracking, tools & weapons. New students are being accepted for spring quarter. Summer quarter will be restricted to those who have participated in at least one previous quarter. Now is your chance to join this exciting class taught by **Cader Olive!**

Spring Quarter: **March** 23, 30; **April** 6, 20, 27; **May** 4, 11, 18 (overnight)

Summer Quarter: **June** 1, 8, 22, 29; **July** 13, 20, 27; **August** 10 (overnight)

Fee: \$495 per quarter.

Questions and registration: **sengel@audubonportland.org**.

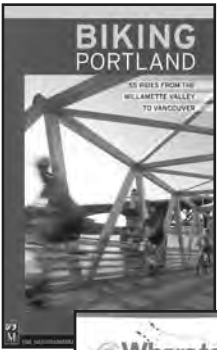
Winter Break Classes 2012				
Register online at www.audubonportland.org — or call Ian Abraham at 971-222-6120. All classes run 8:45am–4:15pm unless otherwise stated.				
MONDAY, DEC. 17	TUESDAY, DEC. 18	WEDNESDAY, DEC. 19	THURSDAY, DEC. 20	FRIDAY, DEC 21
Snowshoe Hares to Polar Bears Grades: 1–3 Have you ever wondered how the smallest birds handle the winter weather? Would you choose to have feathers or fur to survive harsh conditions? Journey within the Audubon Sanctuary as we explore the amazing and unique adaptations that animals use to cope with the harsh winter weather. We'll scour the woods for animal burrows and dens, track the animals we can trail, and end the day working with the Audubon specimens that can teach us the most about the wonderful world of winter animal survival. Fee: \$60 member/ \$70 non-member Instructor: Tim Donner	Creatures of the Night Grades: 1–3 Do you ever wonder what animals roam the Audubon Sanctuary at night? Hike along the trails of our own Wildlife Sanctuary searching for tracks and sign of nocturnal animals. Learn about these nighttime hunters and create colorful watercolor paintings, drawings, and puppets based on your observations. Fee: \$60 member/ \$70 non-member Instructor: Susan Leeb	Audubon's Winter Rangers Grades: 1–3 Bring your camouflage as we explore and discover the amazing secrets of one of the most beautiful forests around — spend your day becoming a Winter Audubon Ranger! Learn to be a quiet presence in the forest.Venture deep into the Audubon Sanctuary to learn the secrets of local plants and animals. Hear the amazing stories about the history of the Audubon forest, and become an expert on how to stay safe in the outdoors. If you love playing outside, learning about nature, and hiding in the woods, this adventurous camp is for you! Come join the ranks of the Winter Audubon Rangers! Fee: \$60 member/ \$70 non-member	Animals in Winter Art Grades: 1–3 Search for signs that many animals leave in our Sanctuary. Use your observations for inspiration to create colorful drawings and fanciful animal masks! Fee: \$60 member/ \$70 non-member Instructor: Susan Leeb	Expedition: Winter Gnomes Grades: 1–3 Step into the world of the fabled Gnomes of the Pacific Northwest as we explore the mystery and folklore of these mythical creatures. Scour the forest equipped with magnifying glasses, Gnome Detectors, and field guides. Search our Sanctuary for any and all signs of Gnomes and learn how these fantastic woodland creatures cope with the difficulties of winter. Fee: \$60 member/ \$70 non-member
Family Snowshoe Adventure Grades: 4–8 Bring along an adult on this one-day adventure of a lifetime (kids welcomed without parent/guardian too). Join Education Director Steve Robertson and Naturalist-Educator Andrea Constance on this family exploration as we venture onto the snow-covered slopes of Mount Hood on snowshoes. We'll traverse the beautiful wilderness area of White River Canyon, searching for tracks of Snowshoe Hare, Bobcat, and Coyote. We've been leading these snowshoe trips for over 12 years and cannot wait to guide another. Along the way, we'll nestle down under the trees and warm up with some hot cocoa. Both instructors are eagerly awaiting the opportunity to team up for the most epic snowball fight of the century! Fee includes snowshoe rental. Fee per person: \$70 member/ \$80 non-member Pick Up & Drop Off at Upper Macleay Park Instructors: Steve Robertson & Andrea Constance	TUESDAY–WEDNESDAY, DEC. 18–19 (overnight)			
	Cookin' at the Cabin Grades: 4–8 The holiday season lends itself to treats and sweets. Prepare your stomachs for fun and food as we head to Portland Audubon's Marmot Cabin for two days and one fun-filled night of this popular favorite, Cookin' at the Cabin. We'll spend one day learning different fire-building techniques in order to explore various cooking methods on an open fire. Anyone up for orange cakes, western hemlock tea, and homemade bannock (bread on a stick!)? Once we've tried our hands at cooking over an open flame, we'll return to the kitchen to delve into more culinary delights such as bread baking, canning, preserving, and much more! Parents: your child is sure to return home with a tasty homemade treat for the whole family to enjoy! Fee: \$130 member/ \$150 non-member Pick Up & Drop Off at Upper Macleay Park Instructors: Andrea Constance & Tim Donner		Snowshoe & Hot Cocoa Adventure Grades: 4–8 Join our Naturalist-Educators on this kids-only trip the snow-covered slopes of Mt. Hood on snowshoes. We'll traverse the White River Canyon searching for tracks of Snowshoe Hare, Bobcat, and Coyote, and along the way we'll warm up with some hot cocoa. Then we team up for the most epic snowball fight ever! Fee includes snowshoe rental. Fee: \$70 member/ \$80 non-member Pick Up/Drop Off: Upper Macleay Park Instructors: Tim Donner & Gladys Ruiz	
		WEDNESDAY, DEC 26	THURSDAY, DEC. 27	
		Junior Wildlife Vet 101, session 1 Grades: 1–3 Join other animal lovers for a day devoted to learning about the care of injured and orphaned wildlife. We'll go behind the scenes of Audubon's Wildlife Care Center with wildlife rehabilitators and find out what this exciting job is all about. Fee: \$60 member/ \$70 non-member	Homing In on Habitat Grades: 1–3 Create imaginative drawings and clay sculptures inspired by animals that live in the Sanctuary. We'll hike through the forest and along the creek, observing habitat and looking for signs of wildlife — all for inspiration for our amazing artwork. Fee: \$60 member/ \$70 non-member Instructor: Susan Leeb	
		Gorge-ous Photography Grades: 4–8 Join Audubon educators on an awe-inspiring adventure into the heart of the Columbia River Gorge to capture images of some of the spectacular natural wonders that lie less than an hour away from Portland! Discuss the basics of composition, lighting, subject, and color as you sip hot cocoa and snap pictures of jaw-dropping panoramas, icy waterfalls, mossy canyons, delicate leaves, and much more. Be sure to bring along a camera and get ready to tell a story in pictures! This one-day camp will cover just the basics of photography, but all skill levels are welcome to join. Fee: \$65 member/ \$75 non-member Instructor: Andrea Constance	Elk Extravaganza Grades: 4–8 Jump on board for an old-fashioned hayride as we study the Roosevelt Elk at Jewell Meadows Wildlife Preserve. Follow Elk trails through the woods and meadows of the coast range. Learn about these animals and other critters we'll see! Participate in an Elk feeding program and safely see these marvelous mammals up close. Fee: \$65 member/ \$75 non-member	
MONDAY, DEC 24 & TUESDAY, DEC. 25 NO CLASS DUE TO HOLIDAY				FRIDAY, DEC. 28
				Junior Raptor Road Trip Grades: 1–4 Join us for a trip on Sauvie Island along the path of the annual Raptor Road Trip put on by Portland Audubon and other organizations. Explore the Road Trip's sites in search of Bald Eagles, hawks, and falcons that winter in the Portland area. Then lead your family on the official Raptor Road Trip in February! Fee: \$65 member/ \$75 non-member
				Junior Wildlife Vet 102 Grades: 4–8 Join other animal lovers for a day devoted to learning about the care of injured and orphaned wildlife. We'll go behind the scenes of Audubon's Wildlife Care Center with wildlife rehabilitators and find out what this exciting job is all about. Fee: \$60 member/ \$70 non-member

Nature Store Highlights

Giving the Gift of Time

by Sally Loomis, Book Buyer

The hyper-commercialism of the holiday season often obscures the real joys and meaning of a gift exchange. Is there any better gift than the gift of one's time, a truly valuable and limited resource, when used to create shared memories and experiences? The titles highlighted this month have the common theme of books that can be part of a larger gift of time spent with a friend or loved one, books that are springboards or guides to a special day together.

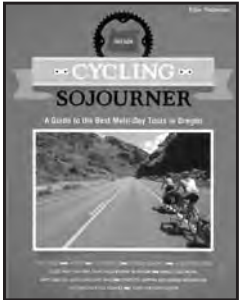


2012 has been a great year for guide books to bicycling in the Portland area and beyond. These should be of interest to both hardcore bicyclists and the most casual weekend riders. ***Biking Portland*** by Owen Wozniak (Mountaineers Books, \$18.95) covers 55 routes in the greater Portland region with detailed instructions and lots of background info on historic sites and natural attractions. ***Where to Bike: Portland*** by Anne Lee (BA Press, \$27.95) covers 72 routes, including 26 that are kid-friendly, and comes in a stay-flat spiral binding for easy use. For the more ambitious, ***Cycling Sojourner: Oregon*** by Ellee Thalheimer (Into Action Publications, \$17.95) covers multi-day tours throughout the state



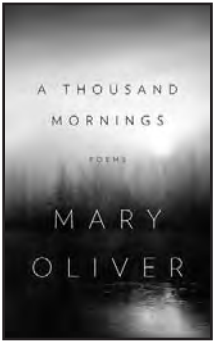
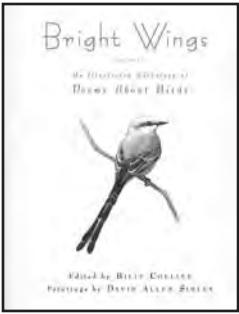
with suggestions for lodging, camping, and food for different budgets. It comes with perforated pages so you can easily detach the specific info for your ride. Thalheimer also contributes to ***Hop in the Saddle: A Guide to Portland's Craft Beer Scene by Bike*** (Into Action Publications, \$9.95) written with Lucy Burningham and Laura Cary. A book, a ride, and a pitcher can combine for a perfect present.

Besides biking books, we also have many wonderful hiking guides and maps for our region. You can create your own Hike of the Month Club to have fun throughout the year with someone special. Please check out our collection for inspirations. Another take on 'active presents' is a selection



from our backyard habitat gardening books, plus an offer of weeding assistance. The gardener in your life will be so pleased.

Not feeling especially athletic? Does an evening inside sharing poetry read aloud sound appealing? (A fireplace and hot cocoa are optional.) Here are two recent titles worth noting. ***Bright Wings: An Illustrated Anthology of Poems about Birds*** is edited by former U.S. Poet Laureate Billy Collins, with illustrations by David Sibley and newly released in paperback (Columbia University Press, \$16.95). Mary Oliver is a keen observer of the natural world, and her newest collection is ***A Thousand Mornings*** (Penguin Press, \$24.95).



Speaking of reading aloud, that is the true magic of children's books. We have a rich variety of nature-themed titles on our children's shelves, so please come in and take a look. If you can share your love of nature and language with a young person, you've really done something wonderful!



A final suggestion: ***A Nature Lover's Almanac: Kinky Bugs, Stealthy Critters, Prosperous Plants & Celestial Wonders*** by Diane Olson (Gibbs Smith, \$12.99) has a fascinating nature fact for every day of the year. You'll need to share them with somebody!



Can't decide?

Give a Nature Store gift certificate!

TAKE A HIKE

Remember — Members Get 10% Off at the Nature Store!

The Nature Store has the best selection of sports optics in Portland, from starter binoculars for kids to top-quality, high-definition models for serious birders. A favorite is the **Leupold BX1 Yosemite 8x30** (member price \$107). This family-friendly binocular can be adjusted to fit kids and adults!

Winter travel plans? Take along the compact **Vortex Diamondback 8x28** (member price \$139.99). New for 2012, these great little binos fit easily into a pocket or small bag for your urban adventures. Or take advantage of the waterproof, fog-proof, and durability features for your trips to the outback!



Vortex Diamondback 8x28

Stop in to see our **expanded offerings in mid-size, affordable binoculars!** And you'll find **new high-definition** optics available with **lighter weight and lower prices.** If your binoculars are more than 5 years old, you'll be amazed at the recent improvements in optical quality and ergonomics.

For the serious birder, Zeiss is continuing their **\$100 rebate** on the new **Zeiss Conquest Full-sized**

Binoculars through the holiday season. This is already the most affordable Zeiss model at under \$1,000 and the rebate makes it an even better bargain. Take advantage before the rebate ends on New Year's Day.

The most exciting news in scopes is the **Swarovski ATX Modular**, available with 3 interchangeable objective lenses: a compact 65mm, the flagship 85mm, and a super-bright 95mm with a magnification range up to 70x! The ATX is the first scope designed specifically for **super-telephotography** directly through the scope's eyepiece. The optional **APO camera adapter** connects directly to the body of a digital SLR or 4/3 cameras allowing you to quickly and easily take video or still images with no perimeter vignettes!



Swarovski ATX Modular

Looking for an affordable good-quality scope? The entry level **Redfield Rampage 80mm Scope** by Leupold is just the ticket at **under \$300 for members!**

Welcome, New Members!

Portland Audubon is a force in conservation thanks to its strength in membership, standing together since 1902. We appreciate each and every one of our members and celebrate our membership by welcoming our new members in each *Warbler*. Thank you for joining our vibrant and growing community!

Patricia Aldrich	Diana Imig
Thomas Ambrose Jr.	Michael Johnson
Finlay Anderson	Carol Keener
Noel Arnold	Kermit & Marla Lohr-Flanders
Darrel Baker	Sheryl MacDonald
Mary-Lane Baker	Lucas Manfield
Robert Bales	The Marcotte Family
Mable Bartlett	Barbara McLean
Carol Bauerle	Janet McQuiston
Laura Beal	Phyllis Millan
Nigel Blakley	Harriet Mount
Mark Bulka	Susan Myers
Mary Calvin	Linda & Michael Osherow
Bonnye Carlton	Terry Palmer
Crystal Clark	Dia Paxton
Harriett Cody & Harvey Sadis	Pamela Pearson
Gloria Crymes	Lori Peterson
Patrick Daugherty	Margaret Reid
Christa Deets	Christopher Reidy
Andrew Dennis	Joyce Remington
Sheila Dougherty	Jim & Dinah Robbins
Jan Eames	Jane Robinson & Michael Sands
Katrina Eisenach	Carrie Schreiber
James Emanuel	Karen & Chris Schwartz
Leslye Evans-Lane	Lisa Selman
Julie Fast	Kendall & Kenneth Shults-Kic
Thomas Friebe	Christine Sizemore
Priscilla Gardner	Sally Slick
Patricia & Samuel Gill	Patricia Smith
William & Carol Greer	Sonja Sopher
Jack & Susan Greve	Donald & Doris Speight
Michael Hatch	Judith & Kenneth Staten
Laurence Himelfarb & Linda Carlson	Troop 45717
Brendan Hughes	Brian van Kleef & John McCall
Lori Hymowitz & Andrew Nemec	Judy Wulf

If you would like to join us or have any questions about membership, please contact Pam Meyers at pmeyers@audubonportland.org or 503-292-6855.

Audubon Society of Portland gratefully acknowledges these thoughtful gifts:

In Memory

Barbara Feagins 5 West Staff at Legacy Health Systems	Wilodean Weimer Rakestraw Nuriya Janss Suniti Kumar
Letty Mayhew Elizabeth Ehrsham	

In Honor

Cathy Schar Diane & Dave Chaffin	Rochelle Teeny St. Ignatius School
Deb Sheaffer Gary & Carol Gross	David Yanity Bonnie & John Fazio

You can honor a special person with a gift to Audubon Society of Portland. Your gift will help fund a future of inspiring people to love and protect nature. You can make an Honor or Memorial gift online at www.audubonportland.org or by calling 971-222-6130. A songbird card acknowledging your thoughtful gift will be sent to the honoree or family.

Wish List & Thank Yous

Thank you to:

- James Kasameyer for a Celestron 15x30 65mm spotting scope and a Celestron 80mm spotting scope for the Education Department
- Alan Locklear & Marie Valleroy for 3 pounds of Endangered Species Chocolate for Volunteer Program
- Deanna Sawtelle for 750 handmade Birthday and Thank-You cards for the Volunteer Program
- Bill Scheiderich for an ergonomic office chair for the Membership Development Department
- Lynn Sweeney for solar bulb for Care Center turtle tank

Our Wish List:

For East Portland Office: 10 Binoculars	For Education: Laptop with dual core processor or greater Powerpoint Projector Desk, approx. 48" x 24"
For Sanctuary: Loppers • Hand saws Work gloves	
For Wildlife Care Center: Science Diet Kitten Growth • Bleach • Dawn Dishwashing Detergent • Water bottles & exercise wheels for small rodents	
If you can donate these items, please first contact Audubon Society of Portland at 503-292-6855 ext.102, Mon-Fri, to arrange a time for delivery/pick-up.	

Go GREEN with Your Gifts this Holiday Season!

Protect birds, wildlife, and our shared habitats by giving gifts that give back!

Sponsor a Wild Thing

Our Wildlife Care Center provides a permanent home for eight non-releasable native birds. Each of these birds is unable to survive in the wild. **Wild Thing Sponsorship — or giving a sponsorship as a gift** — is a great way to learn about these incredible creatures, while at the same time helping us meet their food, medical, and housing needs!

These birds act as ambassadors for their species and for Portland Audubon, in classrooms and at events. Your “Wild Thing” sponsorship or gift sponsorship of one or more of these birds will also provide care for the sick, injured, and orphaned native animals that come to our Care Center for treatment.

- With your tax-deductible adoption, as a Wild Thing Sponsor you or your gift recipient will receive:
- A beautiful color photo of your bird
 - A collectible Wild Thing button featuring your bird
 - A genuine Wild Thing Sponsor Certificate
 - A personal history of your sponsored bird
 - General information on the species
 - Information about helping injured wildlife
 - Recognition on our Wild Thing sponsor board in the Wildlife Care Center

Sponsor a Wild Thing — and give the gift of sponsorship to a fellow nature lover — online at bit.ly/plAfrv or at our Nature Store.

Meet a few of our education birds...



Aristophanes, the Common Raven © Deanna Sawtelle

Aristophanes, the Common Raven
Aristophanes was taken from his nest and raised by humans. As a result, he became imprinted upon people and never learned to act like a raven. Because of his lack of survival skills, he is unreleasable.



Julio, the Great Horned Owl © Chuck Nakell

Julio, the Great Horned Owl
Julio was found as a nestling after the tree holding her nest was cut down. Raised by humans, she never learned to

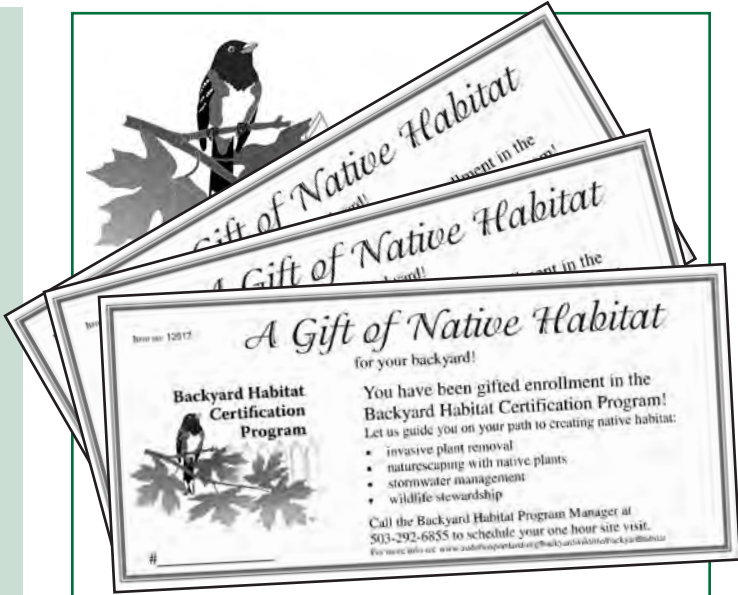
be an owl. By the time she was brought to Audubon in 2005, Julio was 5 years old and it was too late to reverse the imprinting that had occurred.

Lillie, the American Kestrel

Lillie came to Audubon in spring 2009 with deformities resulting from an inappropriate diet after she was taken from the wild at an early age. The resulting malnutrition caused her bones, including her jaw, to form incorrectly. Unable to survive in the wild, she must live the rest of her life in captivity.



Lillie, the American Kestrel © Portland Audubon



Give the Gift of Backyard Habitat!

Are you looking for the perfect gift for your nature-loving friends and family? Perhaps you're in search of a gift that is great for the environment and will keep on giving for years to come? If so, consider giving the gift of habitat, by purchasing **gift certificates for enrollment in the Backyard Habitat Certification Program (BHCP)**. The BHCP is designed to support property owners in improving the ecological health of their yard.

The Backyard Habitat Certification Program can help anyone in **Portland and Lake Oswego** create aesthetically pleasing native landscapes that will help rebuild our region's rich ecological legacy. Right in our own backyards, we all have a great opportunity to build crucial habitat for our native birds and other wildlife. This \$25 gift certificate covers the cost of program participation. As a program participant, your gift recipient will receive a one-hour Site Assessment of their yard, a follow-up Site Report that outlines specific recommendations for enhancing their backyard habitat, education resources, other incentives and coupons, and access to our wholesale native plant sales. This program service is valued at more than \$200, all for only \$25!



To order a BHCP Gift Certificate to have sent to you (or the gift recipient), please call the **Audubon Nature Store** at 503-292-9453. If you have general questions about the Backyard Habitat Certification Program, contact program manager **Nikkie West** at 503-292-6855 ext.126 or nwest@audubonportland.org.

Do You Know Someone Else who Loves Birds?

Give them the gift of a community of bird lovers! A **gift of membership to the Audubon Society of Portland** at any level protects native birds and their habitats, and comes with perks such as discounts on classes, camps, trips, and in our Nature Store.

You know how membership makes you feel, so if you know someone who values birds for birds' sake, treat them to membership in Oregon's oldest conservation organization! You can purchase online at bit.ly/odVKB3 or at our Nature Store, or send in this handy form.

Give the Gift of Membership

- | | |
|--|--|
| <input type="checkbox"/> \$25 Introductory | <input type="checkbox"/> \$100 Goldfinch |
| <input type="checkbox"/> \$35 Individual | <input type="checkbox"/> \$250 Warbler |
| <input type="checkbox"/> \$45 Family | <input type="checkbox"/> \$500 Owl |
| <input type="checkbox"/> \$60 Wren | <input type="checkbox"/> \$1000 Great Blue Heron |

I would like to give a GIFT MEMBERSHIP to:

☐ This gift is for me.
Name: _____
Address: _____
City/State/Zip: _____
Phone: _____
Email: _____

The GIFT MEMBERSHIP is from:

Name: _____
Address: _____
City/State/Zip: _____
Phone: _____
Email: _____

We will send a card to the new member notifying them of your gift.

Payment Method

- ☐ My check, payable to Audubon Society of Portland, is enclosed.
☐ Please charge my:
☐ MasterCard ☐ Visa ☐ Discover
Card #: _____
Expiration Date: _____

Give the Gift of a Living Tree!

Honor someone with a **Gift Tree** from Portland Audubon and Friends of Trees, and help us build a healthy forest. For your donation of \$35, a young native tree will be planted in honor of your friend or family member, and an acknowledgement card will be sent to the person you choose. You will be invited to plant your Gift Tree at one of two annual Gift Tree plantings. (Due to the sensitive nature of the site, we cannot label the trees.) You can purchase online at bit.ly/aONUXr or at our Nature Store, or send in this handy form.

_____ # Gift Tree(s) @ \$35 ea. = \$_____ Total

Your information:

Donor Name: _____
Address: _____
City, State, Zip: _____
Email: _____
Phone: _____

Tributee Information:

In Honor _____ In Memory _____
Honoree Name _____

Gift Notification:

Name: _____
Address: _____
City, State, Zip: _____

Happy Holidays, and Thank You!

The Audubon Society of Portland truly appreciates the support and generosity of its members, donors, volunteers, and partners. We wish you a happy holiday season and a wonderful New Year!



Kestrel photo: Jim Cruce

Cars for Birds!

Your tax-deductible vehicle donation helps protect birds across Oregon. It's easy to rid yourself of that unwanted car or truck! Running or non-running, your vehicle can benefit you with a charitable tax deduction AND support Portland Audubon's conservation and education programs. For information contact **Ann Takamoto** at 971-222-6117 or atakamoto@audubonportland.org.

Your Holiday Gifts are For The Birds... Literally!

continued from cover

Need a treat to drop in a holiday stocking? Try a **Skout Trail Bar** made in the Willamette Valley, or a **Gorge Delight JustFruit Bar** made from all-natural pure fruit from Northwest harvests. If you like nuts with your fruit, pick up a bag from **Lyfonda Farm** in Hood River. All are tasty, healthy snacks for active holiday revelers!

With a Little Help for Our Friends

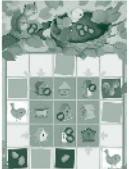
We have an impressive selection of bird feeders and all your favorite seed and suet to **care for your feathered friends throughout the winter season.** While we know birds favor the native seeds, berries, and insects in the garden (see **Backyard Habitat Certification Gift Certificate on page 7**), a boost of healthy supplemental **Nature Store** staples means a lot to a hungry bird come January. A nest box from our species-specific selections replaces lost habitat and ensures a place to raise their brood next spring.

When you give a bird habitat gift to a friend to share with their own special backyard friends, then you’ve created a doubly cherished gift.

Just for the Fun of it: Toys & Games

This year we have a great selection of new and favorite family games. Keep your budding 3- to 6-year-old entomologists busy for hours with the bugs and spiders in **Willy’s Wiggly Web™** and **Snug as a Bug in a Rug!™** games.

Seeds for the Birds™ is an exciting board game for ages 3+. The baby birds are hungry! Players help Mama Bird feed her little babies by turning over the cards one at a time and gathering seeds. Gather more seeds for the birds than for the squirrel and everyone wins!



“Hurry, Owls, it’s time to go home.” **Hoot Owl Hoot!™** is a color-coded cooperative

game for ages 4+. Players help all the owls get home before the sun rises (2011 Oppenheim Platinum Award winner).



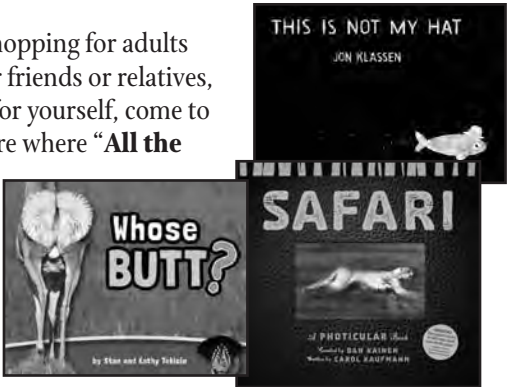
For older kids and adults, we have a beautifully illustrated **Bird Bingo** game featuring 64 species of birds from around the world. It’s a fun and educational twist on the traditional game as players learn the names and colorings of their favorite species as well as wonderful and unusual exotic birds.

Check out the new game that the folks at Looney Labs have added to their popular Fluxx series. With **EcoFluxx®**, in the wild, you must adapt to survive! Using great color graphics and fun environmental facts that correlate with National Science Standards, players discover the interconnections of the natural world while playing a game with challenging ever-changing rules!

What Bird Am I? is a board game designed especially for birders to test their species identification skills. With 3 levels of difficulty, it is perfect for novice, intermediate, and expert birders. The game has 300 spectacular photos of birds from across the continental United States and Canada.

Here’s a little secret... we have one of **Portland’s best selections of stuffed toys and puppets!**

So if you are shopping for adults or children, for friends or relatives, or maybe just for yourself, come to the Nature Store where “**All the Profits are For The Birds!**”



Board Officers

President.....	Kristina Gifford
Vice President	David Mandell
Secretary	Barb Hill
Treasurer	Candy Plant
Past President	Jim Rapp

Board Members

Pat Campbell	Dan Rohlf	Julie Wilson
Tony DeFalco	Michael Ryan	Jay Withgott
Koto Kishida	Anne Sammis	Adrienne
Noelwah Netusil	Mary Solares	Wolf-Lockett
John Osborn	Ron Spencer	

Former Board Member Emeritus - Dave Marshall (1926–2011)

Committee Chairs

Board Affairs	Kristina Gifford
Conservation	Lynn Herring
Education	Koto Kishida
Executive	Kristina Gifford
Finance	Candy Plant
Membership & Development.....	Katy Ehrlich
Sanctuaries	Ann Littlewood
Volunteer Council	Carol Gross

Staff

Executive Director	Meryl Redisch
IT Manager/Office Manager	Tammi Miller
Development Director	Ann Takamoto
Bookkeeper	Jill Hartzell
Membership Development Coordinator	Pam Meyers
Membership Development Assistant	Jane Christensen
Community/Social Media Manager	Tinsley Hunsdorfer
Education Director	Steve Robertson
Adult Education Programs Manager	Steve Engel
Camp Director/Onsite Programs Coordinator.....	Ian Abraham
Adult Educator/Trip Leader.....	Dan van den Broek
Environmental Educator.....	Tim Donner
Environmental Educator.....	Andrea Constance
Eastside Conservation Education Coordinator.....	Gladys Ruiz
Urban Naturalist.....	Mike Houck
Conservation Director	Bob Sallinger
Conservation Program Assistant	Nikkie West
Urban Conservationist	Jim Labbe
Ten Mile Sanctuary Manager.....	Paul Engelmeyer
Volunteer Manager	Deanna Sawtelle
Wildlife Care Center Operations Manager.....	Lacy Campbell
Wildlife Care Center Veterinarian	Deb Sheaffer
Nature Store Manager.....	Nancy Mattson
Nature Store Assistant.....	Marilyn O’Grady
Nature Store Clerk	Sally Loomis
Sanctuaries Director	Tom Costello
Sanctuaries Assistant.....	Greg Kurtz
Sanctuaries Maintenance Technician.....	Rick Meyers
Backyard Habitat Certification Technician	Robin Jensen

Calendar at a Glance

For the latest information, visit audubonportland.org.

December

1	Sat	10am–6pm	Nature Store Open House
2	Sun.....	10am–5pm	Nature Store Open House
2	Sun	12:30pm	Bluegrass Music Jam, Heron Hall
4	Tue	7:30pm.....	Birders’ Night, Heron Hall
5	Wed.....	7pm–9pm.....	The Well-Equipped Birder (p.7)

8	Sat.....	9am–11am	Westmoreland Park (p.2)
8	Sat	9:30am–2pm	Neighborhood Greening Exchange (Nov. Warbler, p.3)

11	Tue	7pm	Nature Night: Photographing the Secret Worlds of Nature
15.....	Sat.....	8am–11am	Ridgefield NWR’s Oaks to Wetland Trail outing (p.2)
15.....	Sat.....	tba.....	Salem Christmas Bird Count (p.4)
15.....	Sat.....	tba.....	Tillamook Bay Christmas Bird Count (p.4)
16.....	Sun	tba.....	Columbia Estuary Christmas Bird Count (p.4)
17.....	Mon.....	tba.....	Upper Nestucca Christmas Bird Count (p.4)

17–21..	Mon–Fri	tba.....	Winter Break Classes (p.7)
22.....	Sat.....	tba.....	Forest Grove Christmas Bird Count (p.4)
24.....	Mon.....	3pm	3pm closing time for Nature Store
25.....	Tue	—	Christmas Day: Nature Store & Admin closed
26–28..	Wed–Fri.....	tba.....	Winter Break Classes (p.7)
29.....	Sat.....	tba.....	Sauvie Island Christmas Bird Count (p.4)
30.....	Sun	tba.....	Hood River Christmas Bird Count (p.4)
31.....	Mon.....	3pm	3pm closing time for Nature Store

January

1	Tue.....	—	New Year’s Day: Nature Store & Admin closed
1	Tue	7:30pm.....	Birders’ Night, Heron Hall (someone will let you in)
5	Sat	tba.....	Portland Christmas Bird Count (p.4)

BUSINESS ALLIANCE

Through their business practices and financial contributions, the following businesses are helping advance our mission and protect Oregon’s birds, natural resources, and livability. If you would like to become a member of the Audubon Society of Portland Business Alliance, please contact our Development Director at 971-222-6117.



Portland General Electric

Backyard Bird Shop
Beaverton Toyota
Bob’s Red Mill
Dave’s Killer Bread
Elk Cove Vineyards
Jackson Welch Mediation/
Arbitration PLLC
Kruger’s Farm Market
Leupold & Stevens, Inc.
McCoy Foat & Company
PC, CPAs
Morel Ink
NePo Suet Company

Visit the Audubon Society of Portland
NATURE STORE

Shady Trails
Nature Books
Hiking Guides

Birding Optics
Toys and Gifts

5151 NW Cornell Rd., Portland OR
503-292-9453 www.audubonportland.org
Minutes from downtown in Forest Park



NW Natural
Portland Audubon Nature Store
Portland General Electric
Regence BlueCross BlueShield
of Oregon
Sauvie Island Coffee Company
Selco Community Credit Union
St Honoré Boulangerie
Vernier Software



Audubon Society of Portland

Inspiring people to love and protect nature since 1902

Audubon Society of Portland promotes the enjoyment, understanding, and protection of native birds and other wildlife and their habitats. We focus on our local community and the Pacific Northwest.

ADMINISTRATION OFFICES

5151 NW Cornell Rd • Portland, OR 97210
503-292-6855 • Fax: 503-292-1021
9am to 5pm, Mon. - Fri.

SANCTUARIES

Dawn to dusk every day

NATURE STORE

503-292-9453
10am to 6pm, Mon. - Sat.
10am to 5pm on Sunday

WILDLIFE

CARE CENTER

503-292-0304
9am to 5pm every day

INTERPRETIVE CENTER

& LIBRARY

Same hours as store

RARE BIRD ALERT

503-292-6855 • www.audubonportland.org



The Audubon Society of Portland is a member of Earth Share of Oregon. For more information, contact Earth Share of Oregon at 503-223-9015 or on the web at www.earthshare-oregon.org.

