

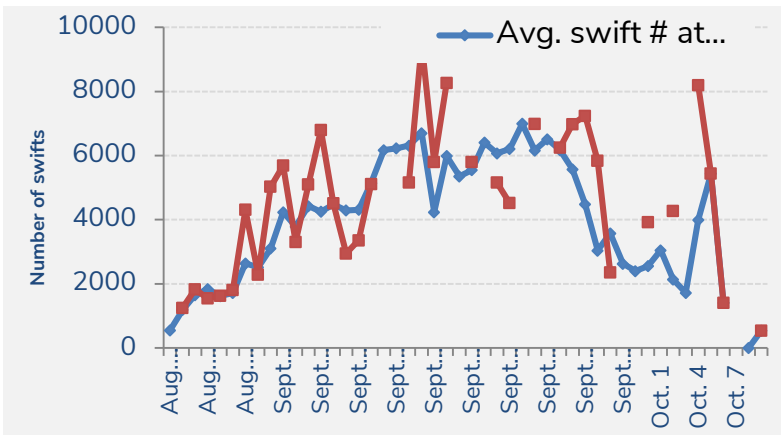
# Swift Count 2019!

## Why We Count Swifts

Since 2009, Portland Audubon has been counting migrating Vaux's Swifts at Chapman Elementary School and at a number of other sites in the Portland-metro region as part of a community science project to monitor population trends of these exciting birds. In addition to tracking local numbers, these counts contribute toward a larger [Pacific Coast-wide effort to track this bird species](#), which has had a declining population trend in the Northwest over the past several decades.

## 2019 Efforts at Chapman Elementary

In 2019, 21 volunteers monitored Chapman 36 nights between August 24<sup>th</sup> and October 8<sup>th</sup>. Swift numbers reached their peak on September 12 when 9,500 birds were counted! There were still a lot of birds counted into early October so we extended our survey effort later this year. It was an unusually rainy September preventing us from surveying on 9 evenings.



Chapman swift counters at work



PORTLAND  
AUDUBON

TOGETHER FOR NATURE

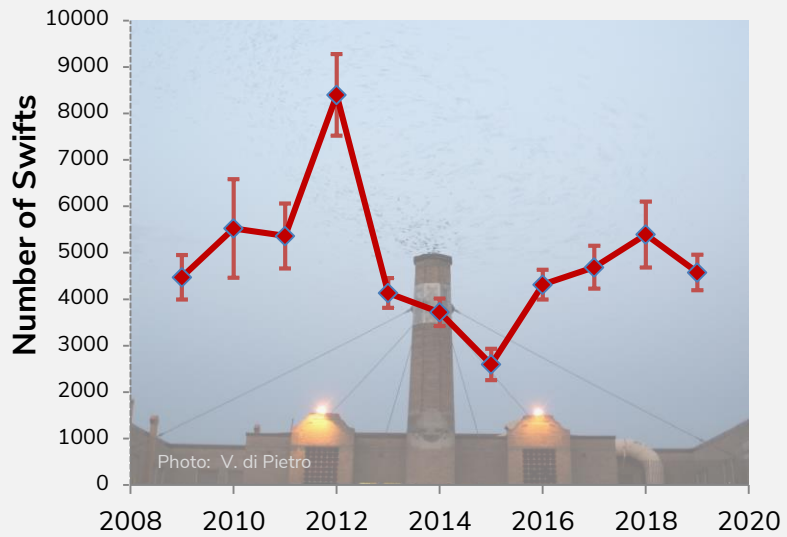


## Annual Trend at Chapman

In 2019 the average number of swifts counted per night at Chapman was 4,577 swifts. This is close to the 11-year average (4,835 swifts per night). Numbers have been trending upward since a low in 2015. See graph on right.

## Swifts Detected at Other Sites in or Near Portland

Oregon City had a record number of observations and high public engagement this year – great job volunteers! Saint John's Theatre and the Museum Annex in Aurora which had peaks of 2,000 or more birds in 2018 were not active this year.



Swift watching in Oregon City (Photo: E. Linser)



Cooper's Hawk

Photo: Hayley Crews

## Predators at Chapman

In 2019 counters documented 7 predation events in 6 of 36 nights. Cooper's Hawks were responsible for all predation events. Several unsuccessful attempts by Peregrine Falcons were witnessed as well.

Site	Peak #	Days surveyed
Oregon City (Main Street)	3,050	26
Forest Grove (Holbrook Masonic Lodge)	1,100	5

## People and Swifts

On average, over 470 spectators came to view the swifts on a given night at Chapman this fall. The peak number was approximately 2,000!

## Chimney Conservation

We want to protect chimneys that traditionally host significant swift roosts. If you hear about chimneys in trouble contact Joe Liebezeit ([jliebezeit@audubonportland.org](mailto:jliebezeit@audubonportland.org); 971-222-6121)



Photo: B. Sallinger